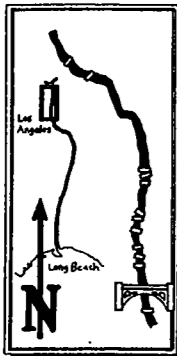
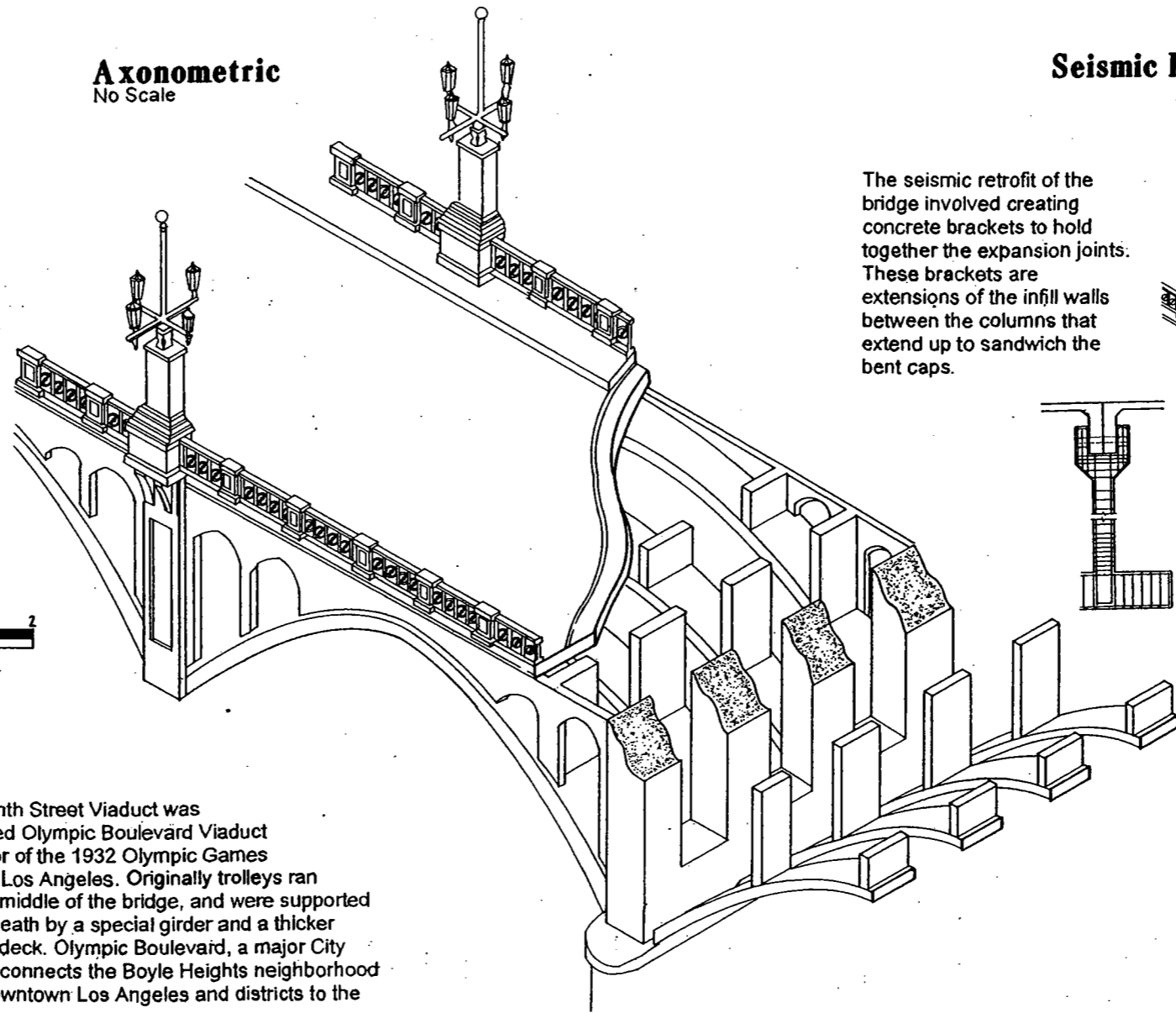


# OLYMPIC BOULEVARD VIADUCT

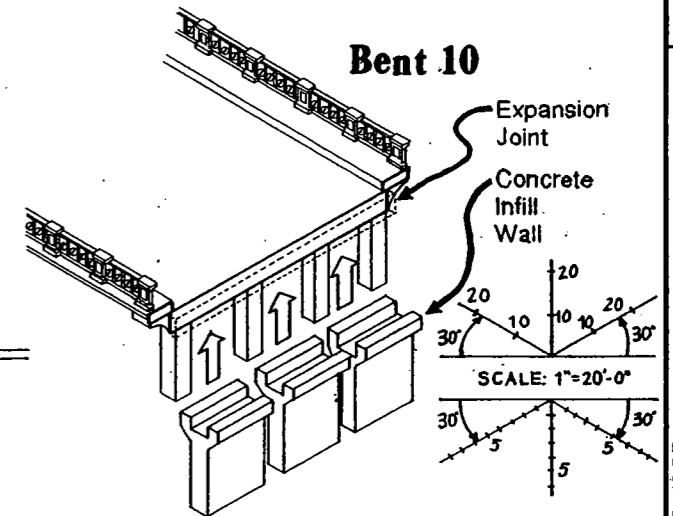


**Axonometric**  
No Scale



**Seismic Retrofit**

The seismic retrofit of the bridge involved creating concrete brackets to hold together the expansion joints. These brackets are extensions of the infill walls between the columns that extend up to sandwich the bent caps.

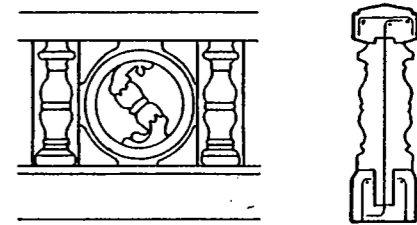


**Seismic Retrofit Legend**

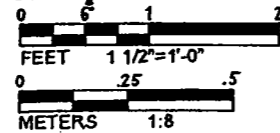
- Shear Wall - Bent Columns
- Footing Enlargement
- Crack and Spall Repair
- Restrainers

**Handrail Restoration**

Railings were reconstructed from the original bridge plans using modern glass fiber reinforced concrete technology.

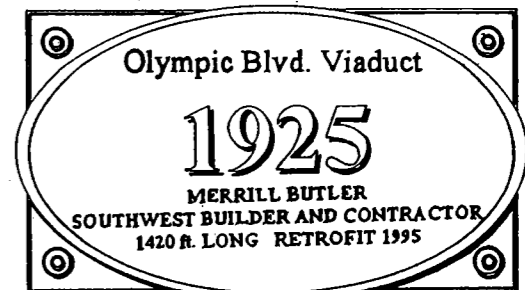
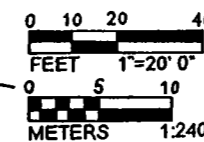
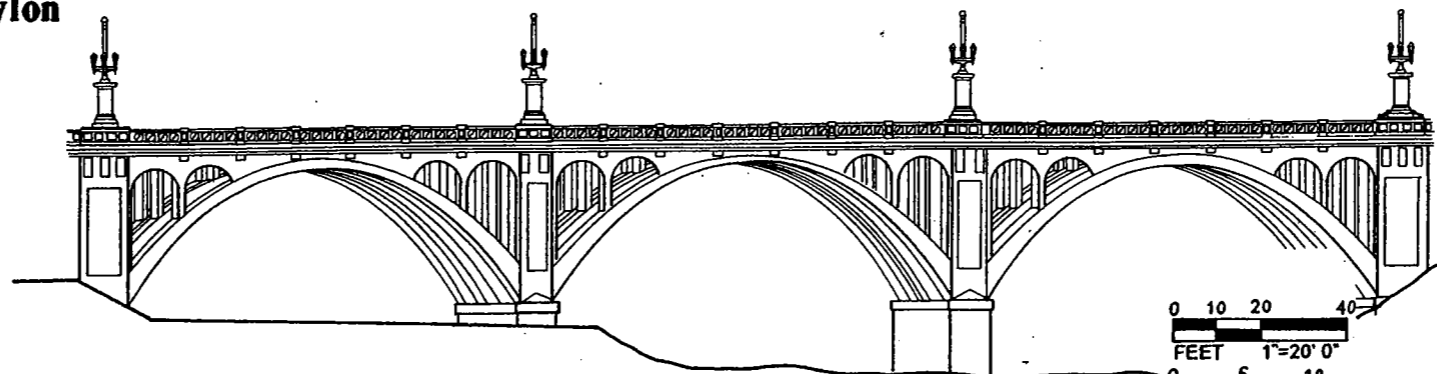
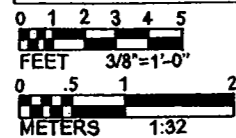
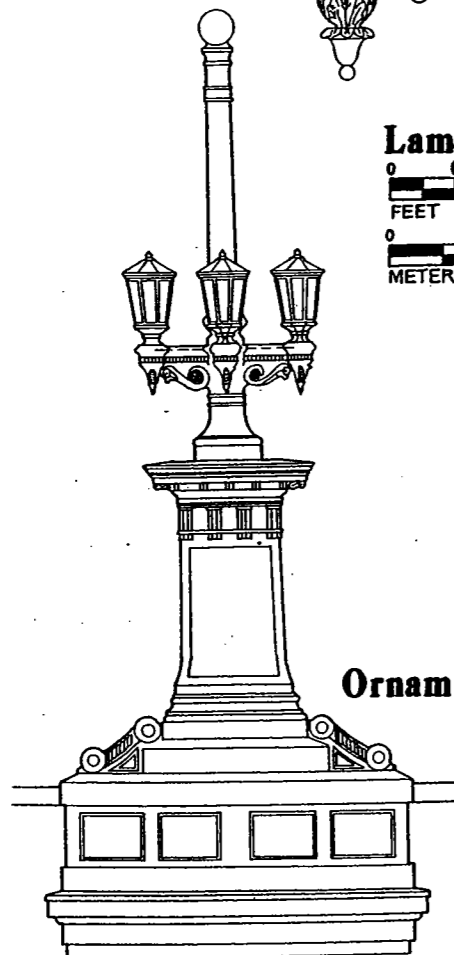


**Lamp**



The Ninth Street Viaduct was renamed Olympic Boulevard Viaduct in honor of the 1932 Olympic Games held in Los Angeles. Originally trolleys ran on the middle of the bridge, and were supported underneath by a special girder and a thicker bridge deck. Olympic Boulevard, a major City artery, connects the Boyle Heights neighborhood with downtown Los Angeles and districts to the west.

**Ornamental Pylon**



HISTORIC AMERICAN ENGINEERING RECORD  
 SHEET 1 OF 1  
 CALIFORNIA  
 LOS ANGELES COUNTY  
 LOS ANGELES  
 OLYMPIC BOULEVARD VIADUCT - 1925  
 DELINEATED BY: GRANT DAY - 2000  
 LOS ANGELES RIVER BRIDGES RECORDING PROJECT  
 NATIONAL PARK SERVICE  
 UNITED STATES DEPARTMENT OF THE INTERIOR  
 IF REPRODUCED, PLEASE CREDIT: HISTORIC AMERICAN ENGINEERING RECORD, NATIONAL PARK SERVICE, NAME OF DELINEATOR, DATE OF THE DRAWING  
 16 of 20