

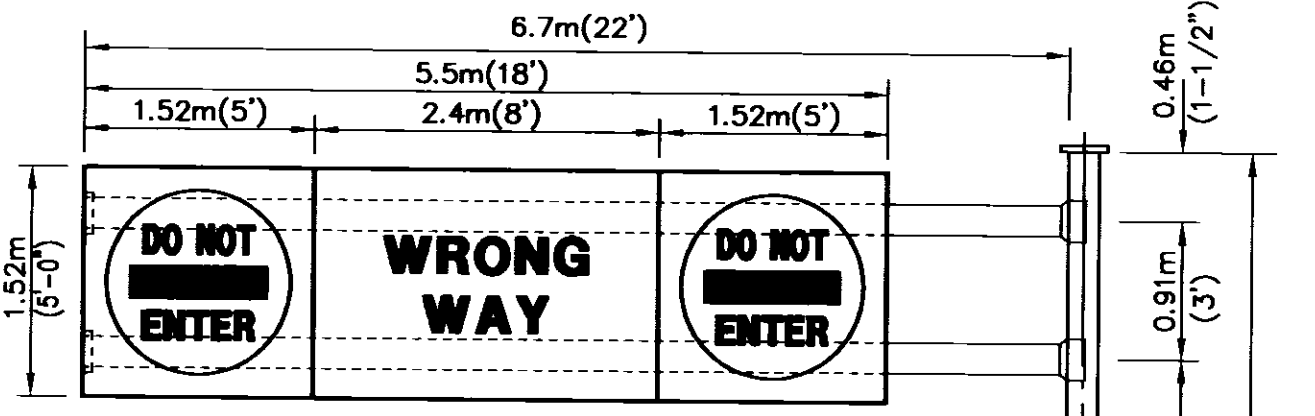
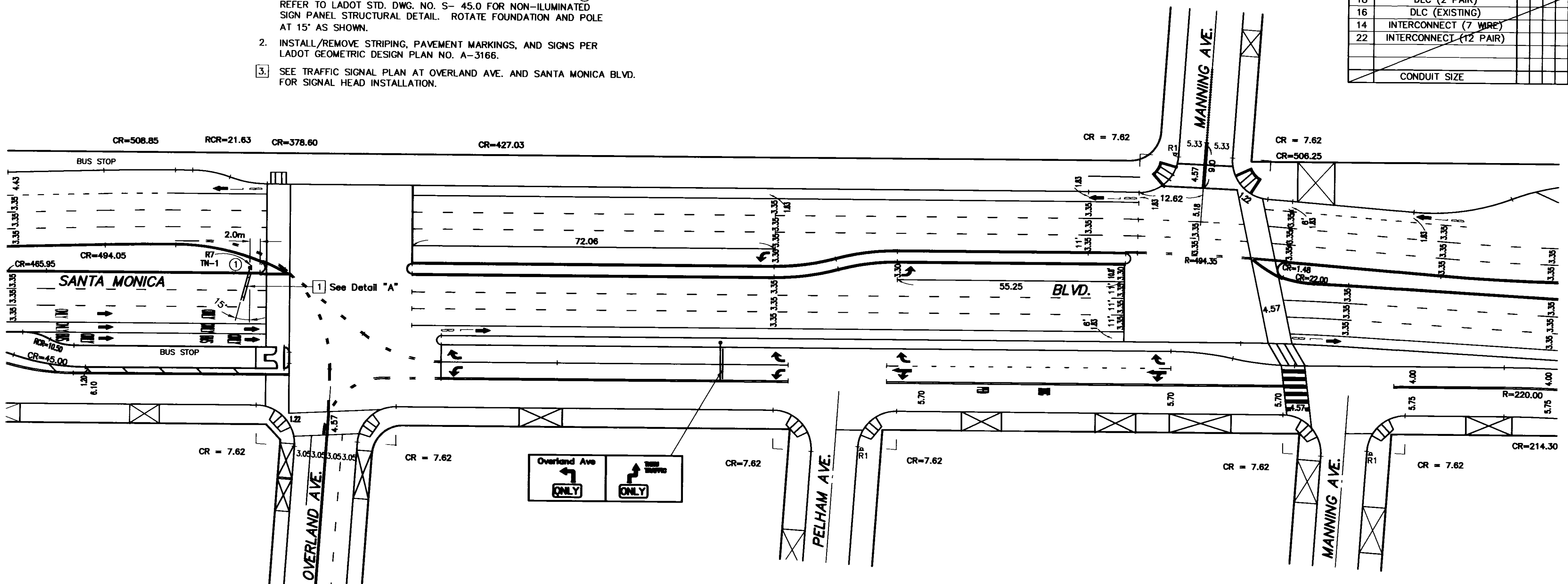
SIGNAL STANDARD SCHEDULE					
No.	TYPE	FOUND. TYPE	PED. PUSH BUT'N TYPE	PHASE	REMARKS
1	Overhead	PF34			Custom 6.7m (22') Cantilever Arms.

ESTIMATED MATERIAL FURNISHED BY LADOT	
UNITS	MATERIAL

ESTIMATED SALVAGE MATERIAL TO BE RETURNED TO LADOT	
UNITS	MATERIAL

CONDUCTOR SCHEDULE		
SIZE No.	CABLE / WIRE	RUN
5	CONDUCTOR CABLE 5 X #14	
9	CONDUCTOR CABLE 8 X #14 & 1 X #12 (COM)	
12	CONDUCTOR CABLE 11 X #14 & 1 X #12 (COM)	
28	CONDUCTOR CABLE 27 X #14 & 1 X #10 (COM)	
SERVICE		
14	PED PUSH BUTTON	
18	DLC (2 PAIR)	
16	DLC (EXISTING)	
14	INTERCONNECT (7 WIRE)	
22	INTERCONNECT (12 PAIR)	
CONDUIT SIZE		

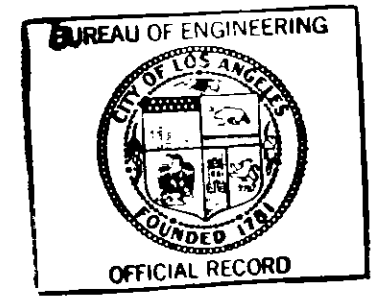
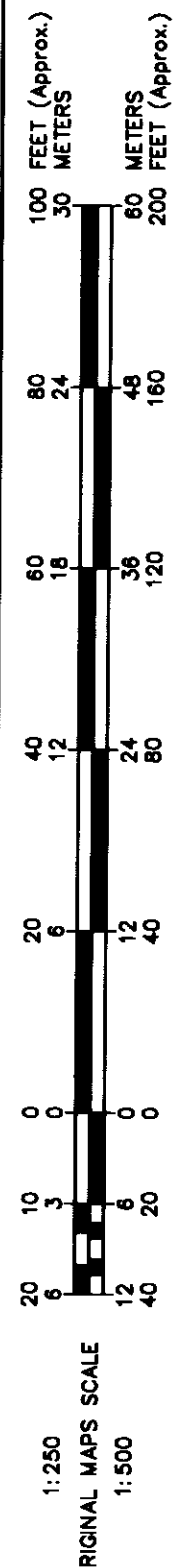
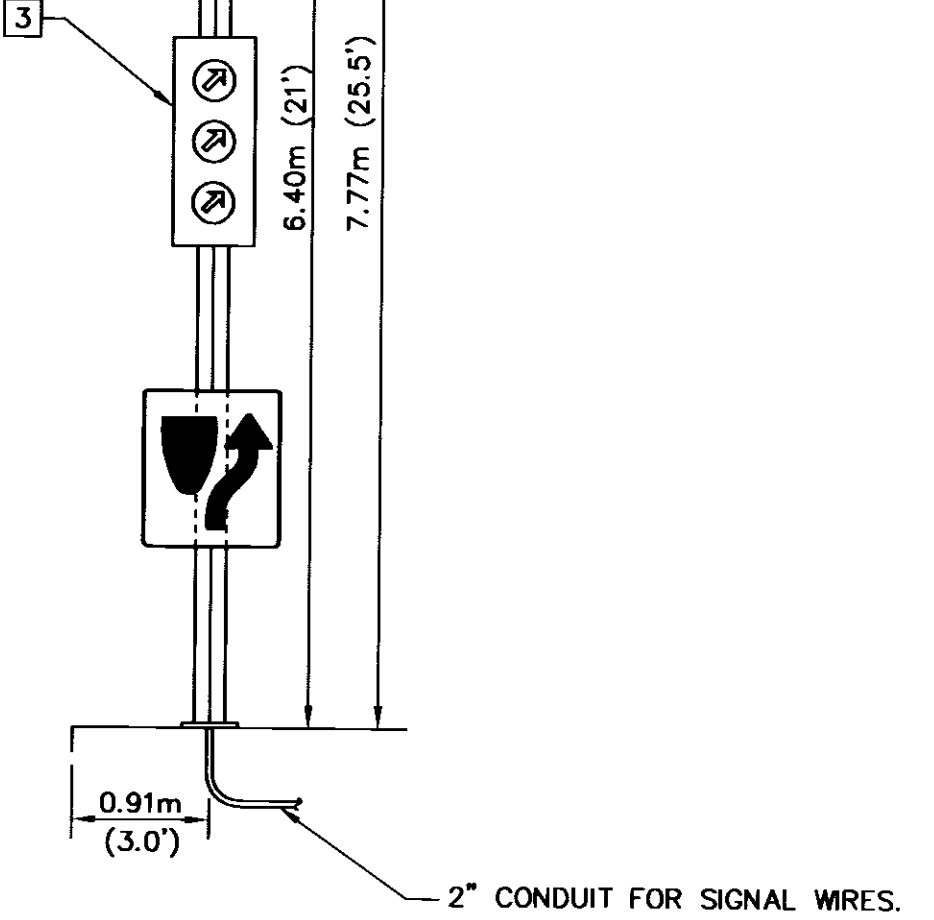
- NOTES:
- INSTALL NON-ILLUMINATED REFLECTORIZED OVERHEAD SIGN PER DETAIL "A" ON 6.7 m (22 FT.) CANTILEVER ARMS AND PF-34 FOUNDATION PER LADOT STD. DWG NO. S-92.2 AT LOCATION (1). REFER TO LADOT STD. DWG. NO. S-45.0 FOR NON-ILLUMINATED SIGN PANEL STRUCTURAL DETAIL. ROTATE FOUNDATION AND POLE AT 15° AS SHOWN.
  - INSTALL/REMOVE STRIPING, PAVEMENT MARKINGS, AND SIGNS PER LADOT GEOMETRIC DESIGN PLAN NO. A-3166.
  - SEE TRAFFIC SIGNAL PLAN AT OVERLAND AVE. AND SANTA MONICA BLVD. FOR SIGNAL HEAD INSTALLATION.



**GUIDE SIGN:**  
 R-11 SIGN : 1.52m x 1.52m (60" x 60")  
 WHITE LEGEND (DIAMOND GRADE/VP) ON RED BACKGROUND (DIAMOND GRADE/VP)

R-11A SIGN : 1.52m x 2.4m (60" x 96")  
 WHITE LEGEND (DIAMOND GRADE/VP) ON RED BACKGROUND (DIAMOND GRADE/VP)  
 WRONG WAY : 270m (10.67") CAPS

FACING WESTBOUND TRAFFIC  
**DETAIL "A"**  
 Scale: 1:50



SANTA MONICA BLVD. TRANSIT PARKWAY PROJECT

RECOMMENDED: April 30, 2002  
 APPROVED: April 30, 2002

By: *Eric Van Der Laan* Transportation Engineer  
 By: *Thomas L. Jones* Senior Transportation Engineer

CITY OF LOS ANGELES  
 DEPARTMENT OF TRANSPORTATION  
 RITA L. ROBINSON, General Manager

TITLE: **OVERHEAD SIGN  
 SANTA MONICA BLVD. W/O OVERLAND AVE.  
 (WESTBOUND)**

File Name: QH17820-N1.DWG  
 Intersection No.:  
 Project No.: 90297

NOTICE: IF PLAN HAS NOT BEEN IMPLEMENTED WITHIN TWO (2) YEARS OF THE APPROVAL DATE, IT MUST BE RESUBMITTED TO LADOT SIGNAL DESIGN SECTION FOR REVIEW AND APPROVAL.