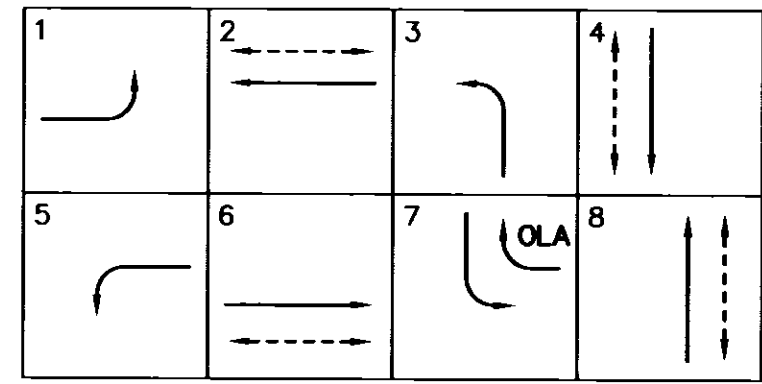


SIGNAL STANDARD SCHEDULE					
No.	TYPE	FOUND. TYPE	PED. PUSH BUTN TYPE	PHASE	REMARKS
1	332 Cab.	F-332			ATSAC 2070 Controller in 332 Cabinet
2	DAVIT*	CIDH**	0.15	8	16.8 M.A.; 29-5-129 Foundation
3	1	F-1			
4	19-3-129	CIDH**			Custom 4.6 M.A.
5	BSL*	BSL*	0.15	4	
6	DAVIT*	CIDH**	0.15	4	16.8 M.A.; 29-5-129 Foundation
7	BSL*	BSL*			
8	19-3-129	CIDH**			Custom 4.6 M.A.
9	BSL*	BSL*	0.15	8	

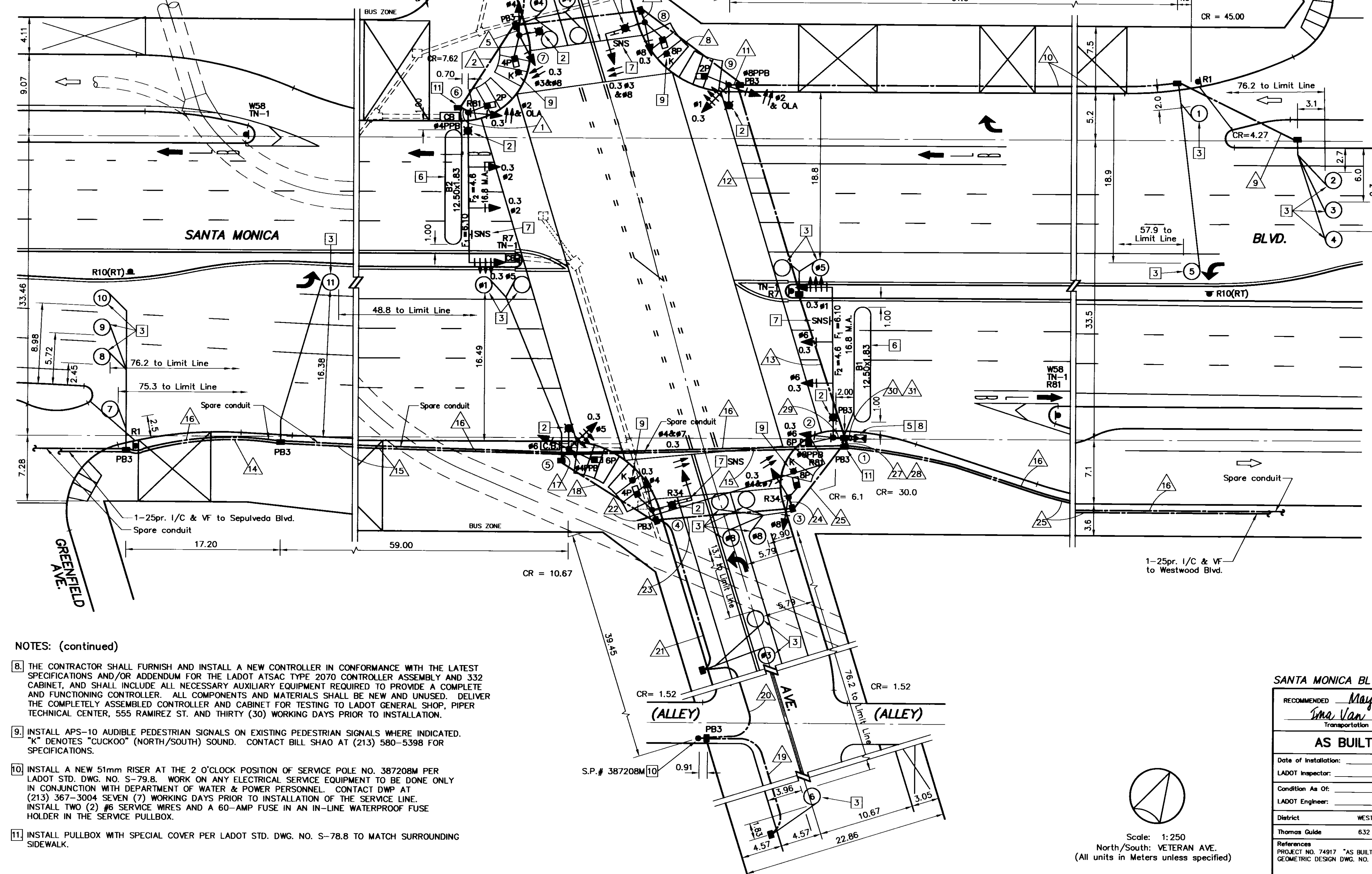
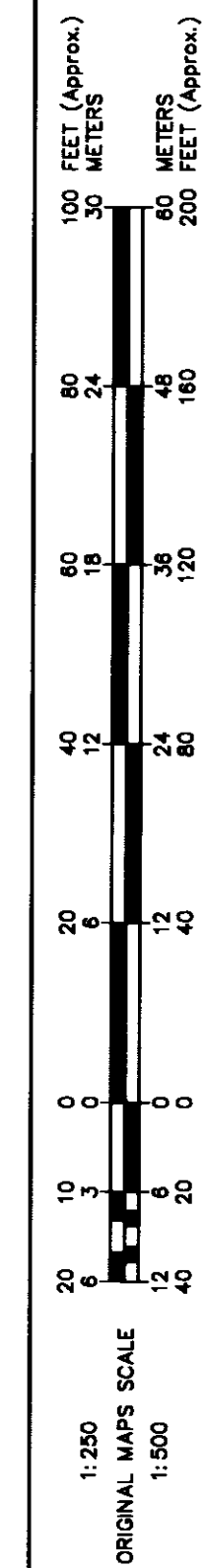
* For Reference Only, See Street Lighting Sheet
 ** Per Caltrans Std. No. ES-7E, ES-7G, ES-7M, ES-7N



PROPOSED PHASE DIAGRAM

- NOTES:
- SEMI-ACTUATED OPERATION WITH TRANSIT PRIORITY (ATSAC 2070 CONTROLLER IN 332 CABINET)
 - #1 - SANTA MONICA BLVD. EB LT
 - #2 - SANTA MONICA BLVD. WB & N/S PED. XING
 - #3 - VETERAN AVE. NB LT
 - #4 - VETERAN AVE. SB & W/S PED. XING
 - #5 - SANTA MONICA BLVD. WB LT
 - #6 - SANTA MONICA BLVD. EB & S/S PED. XING
 - #7 - VETERAN AVE. SB LT
 - #8 - VETERAN AVE. NB & E/S PED. XING
 - OLA (#7) - SANTA MONICA BLVD. WB RT
 - SEE STREET LIGHTING SHEET FOR WORK ON STREET LIGHTING FACILITIES.
 - INSTALL DETECTOR LOOPS PER LADOT STD. DWG. NO. S-70.1A.
 - INSTALL/REMOVE STRIPING, PAVEMENT MARKINGS AND SIGNS PER LADOT GEOMETRIC DESIGN DWG. NO. A-3166 AND A-3169.
 - INSTALL 1 TRANSIT PRIORITY SENSOR UNIT IN THE CONTROLLER CABINET PER LADOT STD. DWG. NO. 70.3A.
 - INSTALL TRANSIT PRIORITY LOOPS PER LADOT STD. DWG. NO. S-70.1F.
 - INSTALL LARGE STREET NAME SIGN PER LADOT STD. DWG. NO. S-457.0 & S-486.0.

CONDUCTOR SCHEDULE		RUN																							
SIZE No.	CABLE / WIRE	1	2	3	4	5	6	7	8	9	10	11	12	13	14	15	16	17	18	19	20	21	22	23	24
5	CONDUCTOR CABLE 5 X #14																								
9	CONDUCTOR CABLE 8 X #14 & 1 X #12 (COM)																								
12	CONDUCTOR CABLE 11 X #14 & 1 X #12 (COM)																								
28	CONDUCTOR CABLE 27 X #14 & 1 X #10 (COM)																								
6	SERVICE																								
14	PED PUSH BUTTON																								
16	DLC (2 PAIR)																								
16	DLC (3 PAIR)																								
16	DLC (4 PAIR)																								
22	INTERCONNECT (12 PAIR)																								
22	INTERCONNECT (25 PAIR)																								
12	BUS DLC (1 PAIR)																								
	VIDEO FIBER (24SM)																								
	CONDUIT SIZE (mm)	51	51	51	51	76	51	51	51	51	76	76	76	76	51	51	76	51	51	51	76	76	51	76	76



- NOTES: (continued)
- THE CONTRACTOR SHALL FURNISH AND INSTALL A NEW CONTROLLER IN CONFORMANCE WITH THE LATEST SPECIFICATIONS AND/OR ADDENDUM FOR THE LADOT ATSAC TYPE 2070 CONTROLLER ASSEMBLY AND 332 CABINET, AND SHALL INCLUDE ALL NECESSARY AUXILIARY EQUIPMENT REQUIRED TO PROVIDE A COMPLETE AND FUNCTIONING CONTROLLER. ALL COMPONENTS AND MATERIALS SHALL BE NEW AND UNUSED. DELIVER THE COMPLETELY ASSEMBLED CONTROLLER AND CABINET FOR TESTING TO LADOT GENERAL SHOP, PIPER TECHNICAL CENTER, 555 RAMIREZ ST. AND THIRTY (30) WORKING DAYS PRIOR TO INSTALLATION.
 - INSTALL APS-10 AUDIBLE PEDESTRIAN SIGNALS ON EXISTING PEDESTRIAN SIGNALS WHERE INDICATED. "K" DENOTES "CUCKOO" (NORTH/SOUTH) SOUND. CONTACT BILL SHAO AT (213) 580-5398 FOR SPECIFICATIONS.
 - INSTALL A NEW 51mm RISER AT THE 2 O'CLOCK POSITION OF SERVICE POLE NO. 387208M PER LADOT STD. DWG. NO. S-79.8. WORK ON ANY ELECTRICAL SERVICE EQUIPMENT TO BE DONE ONLY IN CONJUNCTION WITH DEPARTMENT OF WATER & POWER PERSONNEL. CONTACT DWP AT (213) 367-3004 SEVEN (7) WORKING DAYS PRIOR TO INSTALLATION OF THE SERVICE LINE. INSTALL TWO (2) #6 SERVICE WIRES AND A 60-AMP FUSE IN AN IN-LINE WATERPROOF FUSE HOLDER IN THE SERVICE PULLBOX.
 - INSTALL PULLBOX WITH SPECIAL COVER PER LADOT STD. DWG. NO. S-78.8 TO MATCH SURROUNDING SIDEWALK.

SANTA MONICA BLVD. TRANSIT PARKWAY PROJECT- FINAL

RECOMMENDED May 16, 20 02 APPROVED May 16, 20 02
Uma Van Der Laan Thomas L. Jones
 Transportation Engineer Senior Transportation Engineer



AS BUILT		CITY OF LOS ANGELES DEPARTMENT OF TRANSPORTATION RITA L. ROBINSON, General Manager	
Date of Installation:		TITLE	
LADOT Inspector:		SANTA MONICA BLVD. & VETERAN AVE.	
Condition As Of:		File Name	Intersection No.
LADOT Engineer:		17750-M5.DWG	17750
District	WESTERN	Project No.	90297
Thomas Guide	632 B5	NOTICE: IF PLAN HAS NOT BEEN IMPLEMENTED WITHIN TWO (2) YEARS OF THE APPROVAL DATE, IT MUST BE RESUBMITTED TO LADOT SIGNAL DESIGN SECTION FOR REVIEW AND APPROVAL.	
References	PROJECT NO. 74917 "AS BUILT" 02-14-00 GEOMETRIC DESIGN DWG. NO. A-3165		