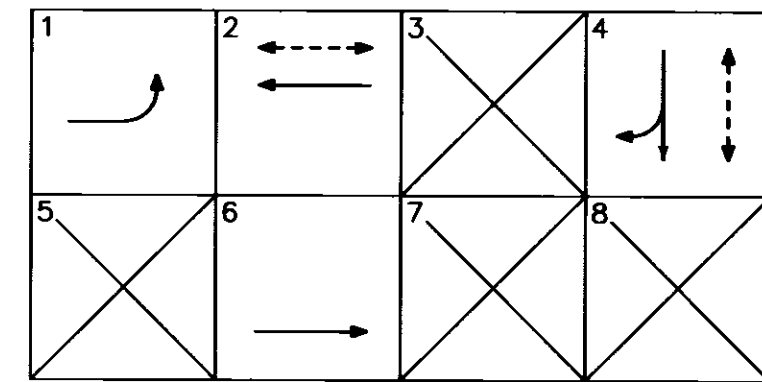


SIGNAL STANDARD SCHEDULE					
No.	TYPE	FOUND. TYPE	PED. PUSH BUTN TYPE	PHASE	REMARKS
1	332 Cab	F-332			ATSAC 2070 Controller in 332 Cabinet
2	Dual Davit*	CIDH**	0.15	4	13.7m Mast Arm, 26-4-129 Foundation
3	1A	F-1			
4	1	F-1			
5	Davit*	CIDH**			9.1m Mast Arm, 19-4-129 Foundation
6	9	F-1			
7	BSL*	BSL*	0.15	4	

* For reference only; see Street Lighting sheet.
 ** Per Caltrans Standard No. ES-7F, ES-7M & ES-7N.

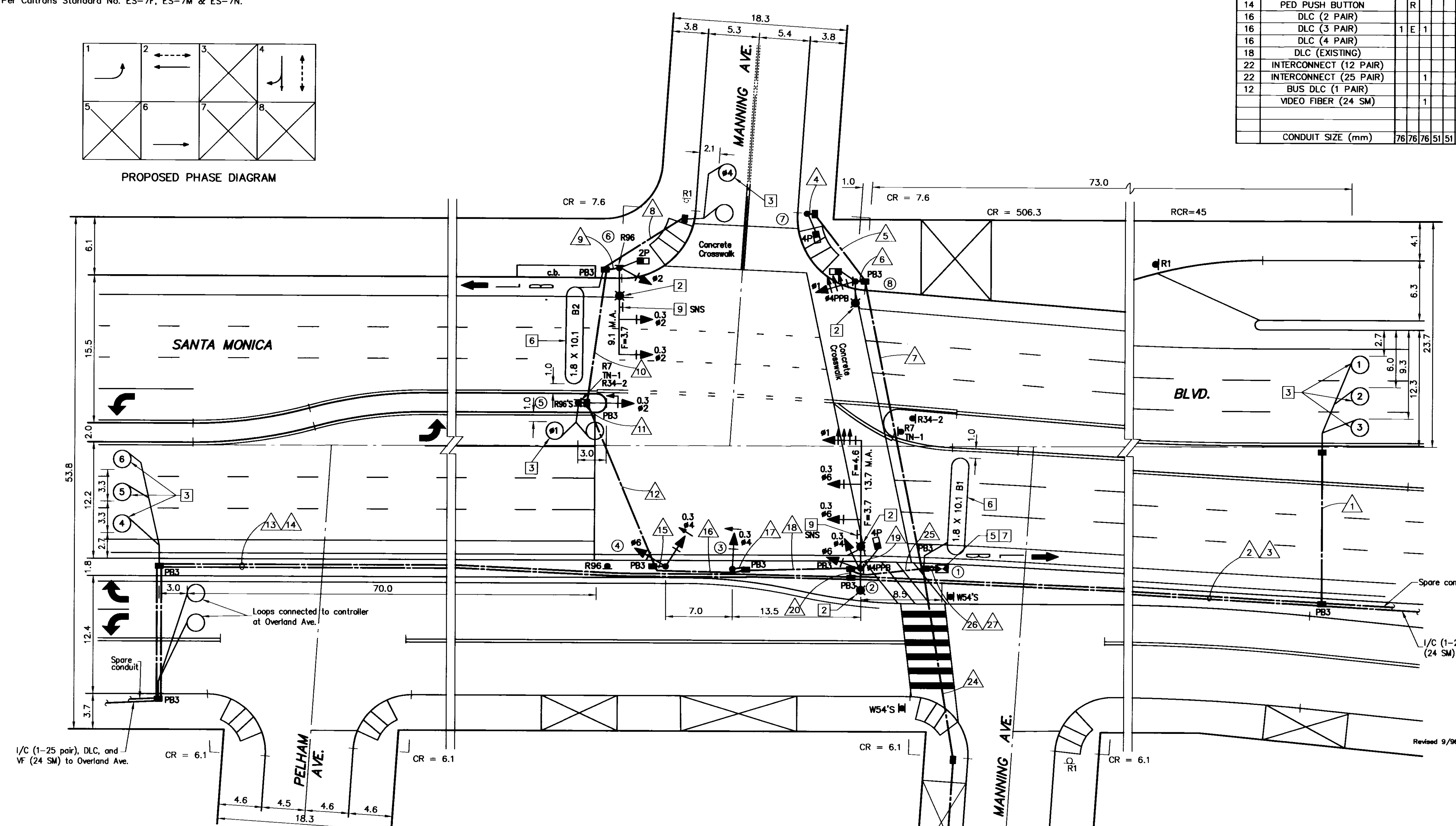
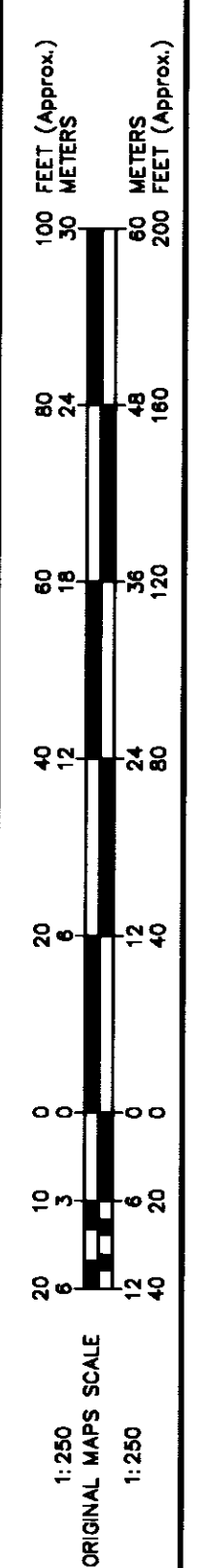


PROPOSED PHASE DIAGRAM

ESTIMATED MATERIAL FURNISHED BY LADOT	
UNITS	MATERIAL

ESTIMATED SALVAGE MATERIAL TO BE RETURNED TO LADOT	
UNITS	MATERIAL

CONDUCTOR SCHEDULE		RUN																							
SIZE No.	CABLE / WIRE	1	2	3	4	5	6	7	8	9	10	11	12	13	14	15	16	17	18	19	20	21	22	23	24
5	CONDUCTOR CABLE 5 X #14																								
9	CONDUCTOR CABLE 8 X #14 & 1 X #12 (COM)	S																							
12	CONDUCTOR CABLE 11 X #14 & 1 X #12 (COM)	P																							
28	CONDUCTOR CABLE 27 X #14 & 1 X #10 (COM)	A																							
4	SERVICE																								
14	PED PUSH BUTTON	R																							
16	DLC (2 PAIR)																								
16	DLC (3 PAIR)	1 E 1																							
16	DLC (4 PAIR)																								
18	DLC (EXISTING)																								
22	INTERCONNECT (12 PAIR)																								
22	INTERCONNECT (25 PAIR)	1																							
12	BUS DLC (1 PAIR)																								
	VIDEO FIBER (24 SM)	1																							
	CONDUIT SIZE (mm)	76	76	76	51	51	51	76	76	76	76	76	51	51	51	76	76	76	76	76	76	76	76	76	

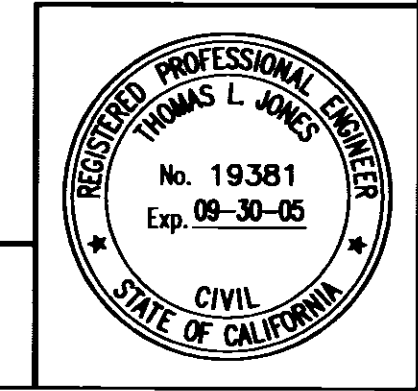
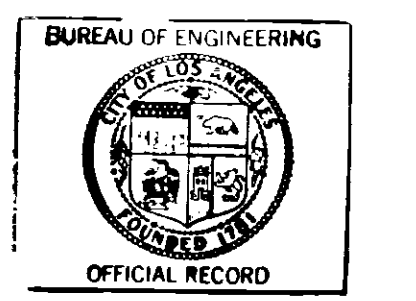


- NOTES:
- SEMI-ACTUATED OPERATION WITH TRANSIT PRIORITY (ATSAC 2070 CONTROLLER IN 332 CABINET)
 #1 - SANTA MONICA BLVD. EB LT.
 #2 - SANTA MONICA BLVD. WB & N/S PED. XING
 #4 - MANNING AVE. SB, SB RT. & E/S PED. XING
 #6 - SANTA MONICA BLVD. EB WESTWOOD ATSAC SYSTEM DIRECT WIRE (CABLE) INTERCONNECT
 - SEE STREET LIGHTING SHEET FOR WORK ON STREET LIGHTING FACILITIES.
 - INSTALL DETECTOR LOOPS PER LADOT STD. DWG. NO. S-70.1A.
 - INSTALL/REMOVE STRIPING, PAVEMENT MARKINGS AND SIGNS PER LADOT GEOMETRIC DESIGN DWG. NO. A-3166.
 - THE CONTRACTOR SHALL FURNISH AND INSTALL A NEW CONTROLLER IN CONFORMANCE WITH THE LATEST SPECIFICATIONS AND/OR ADDENDUM FOR THE LADOT ATSAC TYPE 2070 CONTROLLER ASSEMBLY AND 332 CABINET, AND SHALL INCLUDE ALL NECESSARY AUXILIARY EQUIPMENT REQUIRED TO PROVIDE A COMPLETE AND FUNCTIONING CONTROLLER. ALL COMPONENTS AND MATERIALS SHALL BE NEW AND UNUSED. DELIVER THE COMPLETELY ASSEMBLED CONTROLLER AND CABINET FOR TESTING TO LADOT GENERAL SHOP, PIPER TECHNICAL CENTER, 555 RAMIREZ ST. AND THIRTY (30) WORKING DAYS PRIOR TO INSTALLATION.

- NOTES, (Continued):
- INSTALL TRANSIT PRIORITY LOOP PER LADOT STD. DWG. NO. S-70.1F
 - INSTALL 1 TRANSIT PRIORITY SENSOR UNIT IN THE CONTROLLER CABINET PER LADOT STD. DWG. NO. S-70.3A.
 - INSTALL TWO-INCH (2") RISER ON THE 11 O'CLOCK POSITION OF SERVICE POLE NO. 63692M, 2-#4 SERVICE WIRES FROM PULLBOX TO CONTROLLER AND A 60-AMP FUSE IN AN IN-LINE WATERPROOF FUSE HOLDER IN SERVICE PULLBOX. INSTALLATION SHALL BE PER LADOT STD. DWG. NO. S-79.8. WORK ON ANY ELECTRICAL SERVICE EQUIPMENT TO BE DONE IN CONJUNCTION WITH DEPARTMENT OF WATER & POWER (DWP) PERSONNEL. CONTACT DWP AT (213) 367-3002 SEVEN (7) WORKING DAYS PRIOR TO BEGINNING WORK ON THE SERVICE LINE.
 - INSTALL LARGE STREET NAME SIGN PER LADOT STD. DWG. NO. S-457.0. AND S-486.0.

NEW SIGNAL
 SANTA MONICA BLVD. TRANSIT PARKWAY PROJECT - FINAL

RECOMMENDED May 15, 2002 APPROVED MA-15, 2002
Dina Van Der Laan Transportation Engineer *Thomas Jones* Senior Transportation Engineer



AS BUILT		CITY OF LOS ANGELES DEPARTMENT OF TRANSPORTATION RITA L. ROBINSON, General Manager	
Date of Installation:	LADOT Inspector:	TITLE	
Condition As Of:	LADOT Engineer:	MANNING AVE. & SANTA MONICA BLVD.	
District: WESTERN	Thomas Guide: 632 D4	File Name: 17822-N1.DWG	Intersection No. 17822
References: DM1328157 P-16371 P-32178 GEOMETRIC DESIGN DWG. NO. A-3165		Project No. 90297	
NOTICE: IF PLAN HAS NOT BEEN IMPLEMENTED WITHIN TWO (2) YEARS OF THE APPROVAL DATE, IT MUST BE RESUBMITTED TO LADOT SIGNAL DESIGN SECTION FOR REVIEW AND APPROVAL.			