

SIGNAL STANDARD SCHEDULE					
No.	TYPE	FOUND. TYPE	PED. PUSH BUTN TYPE	PHASE	REMARKS
1	332 Cab.	F-332			ATSAC 2070 Controller in 332 Cabinet
2	1	F-1	0.10m	4	
3	1	F-1	0.10m	4	(Remove)
4	12m Davit	CIDH**	0.15m	4	13.7m Mast Arm; 26-4-129 Foundation
5	CD851	BSL			
6	Overhead				Sign Bridge
7	12m BSL	BSL			
8	12.1m Davit	CIDH			9.2m Mast Arm
9	1	F-1			
10	19-4-113	CIDH			7.62m Mast Arm

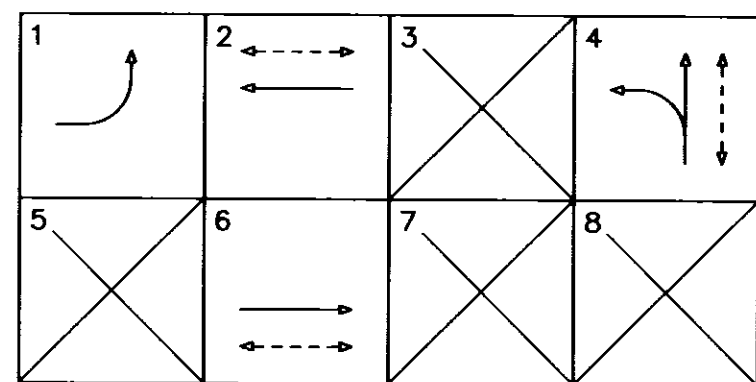
* Existing
 ** Per Caltrans Std. No. ES-7E, ES-7M, ES-7N

ESTIMATED MATERIAL FURNISHED BY LADOT	
UNITS	MATERIAL

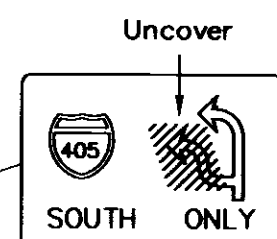
ESTIMATED SALVAGE MATERIAL TO BE RETURNED TO LADOT	
UNITS	MATERIAL
1	120-Controller-and-Cabinet

CONDUCTOR SCHEDULE									
SIZE No.	CABLE / WIRE	RUN							
		1	2	3	4	5	6	7	8
5	CONDUCTOR CABLE 5 X #14								
9	CONDUCTOR CABLE 8 X #14 & 1 X #12 (COM)								
12	CONDUCTOR CABLE 11 X #14 & 1 X #12 (COM)								
28	CONDUCTOR CABLE 27 X #14 & 1 X #10 (COM)	1	1	1	1				
6	SERVICE								
14	PED PUSH BUTTON								
18	DLC (2 PAIR)								
16	DLC (EXISTING)								
14	INTERCONNECT (7 WIRE)								
22	INTERCONNECT (25 PAIR)								
12	BUS DLC (1 PAIR)								
CONDUIT SIZE		53	76	53	76				

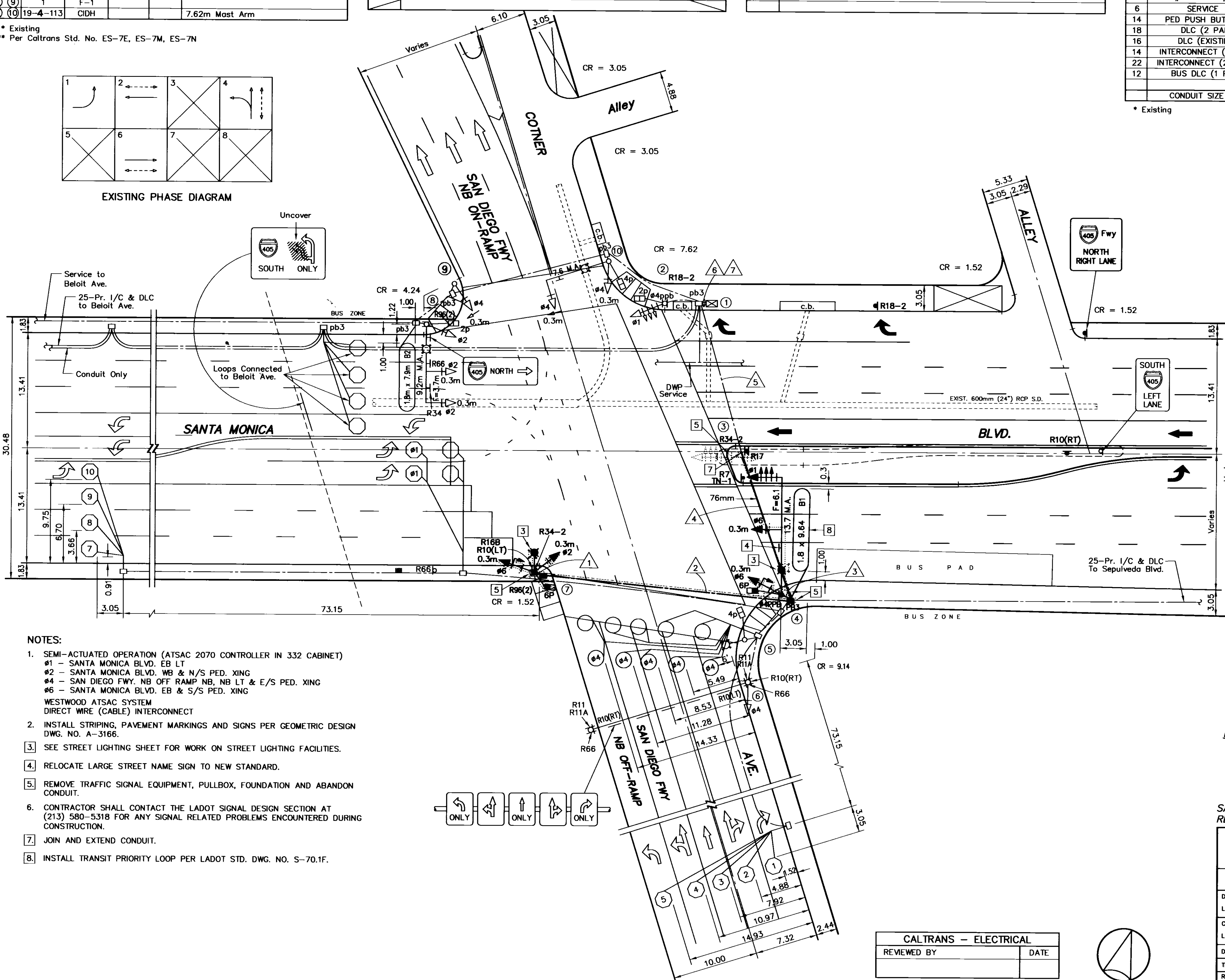
* Existing



EXISTING PHASE DIAGRAM



Uncover SOUTH ONLY

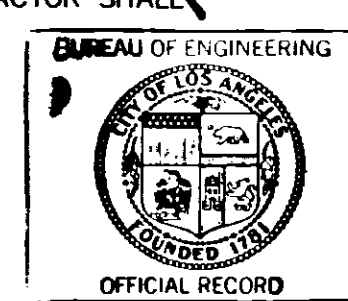


- NOTES:
- SEMI-ACTUATED OPERATION (ATSAC 2070 CONTROLLER IN 332 CABINET)
 - #1 - SANTA MONICA BLVD. EB LT
 - #2 - SANTA MONICA BLVD. NB & N/S PED. XING
 - #4 - SAN DIEGO FWY. NB OFF RAMP NB, NB LT & E/S PED. XING
 - #6 - SANTA MONICA BLVD. EB & S/S PED. XING
 - WESTWOOD ATSAC SYSTEM DIRECT WIRE (CABLE) INTERCONNECT
 - INSTALL STRIPING, PAVEMENT MARKINGS AND SIGNS PER GEOMETRIC DESIGN DWG. NO. A-3166.
 - SEE STREET LIGHTING SHEET FOR WORK ON STREET LIGHTING FACILITIES.
 - RELOCATE LARGE STREET NAME SIGN TO NEW STANDARD.
 - REMOVE TRAFFIC SIGNAL EQUIPMENT, PULLBOX, FOUNDATION AND ABANDON CONDUIT.
 - CONTRACTOR SHALL CONTACT THE LADOT SIGNAL DESIGN SECTION AT (213) 580-5318 FOR ANY SIGNAL RELATED PROBLEMS ENCOUNTERED DURING CONSTRUCTION.
 - JOIN AND EXTEND CONDUIT.
 - INSTALL TRANSIT PRIORITY LOOP PER LADOT STD. DWG. NO. S-70.1F.

(SEE SHEET 10 OF PLAN D-32149)

NOTICE TO CONTRACTOR

- EXCEPT WHERE OTHERWISE INDICATED, MATERIALS AND INSTALLATION METHODS SHALL CONFORM TO THE LATEST EDITION, WITH SUPPLEMENTS, OF THE STANDARD SPECIFICATION FOR PUBLIC WORKS CONSTRUCTION, ADOPTED BY THE CITY OF LOS ANGELES BOARD OF PUBLIC WORKS (LAPBW), INCLUDING THE LATEST VERSION OF STANDARD PLAN S-610 ISSUED BY THE LAPBW, AND THE LATEST EDITION, WITH AMENDMENTS, OF THE SPECIAL PROVISIONS AND STANDARD DRAWINGS FOR THE INSTALLATION AND MODIFICATION OF TRAFFIC SIGNALS, ISSUED BY THE CITY OF LOS ANGELES DEPARTMENT OF TRANSPORTATION (LADOT).
- THE LADOT TRAFFIC SIGNAL INSPECTOR AT (213) 485-6838 SHALL BE NOTIFIED THREE (3) WORKING DAYS PRIOR TO THE BEGINNING OF CONSTRUCTION. FOR WORK IN THE AUTOMATED TRAFFIC SURVEILLANCE AND CONTROL (ATSAC) PROJECT AREA, A FIELD MEETING SHALL BE SCHEDULED WITH THE ATSAC PROJECT ENGINEER AT (213) 847-0303 AND THE SENIOR MAINTENANCE SUPERVISOR AT (213) 485-6790 THREE (3) WORKING DAYS PRIOR TO THE BEGINNING OF CONSTRUCTION. FULL RESTORATION OF THE ATSAC SYSTEM MUST OCCUR WITHIN FIVE (5) WORKING DAYS AFTER SHUT DOWN.
 - REGULAR TRAFFIC SIGNAL CONTROL SHALL BE MAINTAINED FROM 6:00 A.M. TO 9:00 A.M. AND 3:00 P.M. TO 7:00 P.M. ON WEEKDAYS, EXCEPT NATIONAL HOLIDAYS. FLASHING, DEACTIVATION AND ACTIVATION OF SIGNALS SHALL BE ACCOMPLISHED ONLY BY A LADOT TRAFFIC SIGNAL ELECTRICIAN. ALL ARRANGEMENTS TO DEACTIVATE SIGNALS SHALL BE MADE 24 HOURS IN ADVANCE BY CONTACTING THE LADOT TRAFFIC SIGNAL DEDICATED LINE AT (213) 485-9161 BETWEEN 6:30 A.M. AND 12 NOON. THE LADOT PROJECT NUMBER MUST BE GIVEN AT THIS TIME. THE CONTRACTOR WILL BE CHARGED FOR ALL ELECTRICAL AND TRAFFIC CONTROL SERVICE PROVIDED BY LADOT.
 - ARRANGEMENTS FOR OBTAINING ANY MATERIALS IDENTIFIED TO BE SUPPLIED BY LADOT SHALL BE MADE TEN (10) WORKING DAYS IN ADVANCE BY CONTACTING THE LADOT FIELD OPERATIONS DIVISION AT (213) 580-5350. HOWEVER, TRAFFIC SIGNAL CONTROLLERS REQUIRE THIRTY (30) CALENDAR DAYS ADVANCE NOTICE AND MUST BE PICKED UP WITHIN FIFTEEN (15) CALENDAR DAYS AFTER NOTIFICATION. CONTACT LADOT SIGNAL SHOP AT (213) 847-2944 TO COORDINATE CONTROLLER DELIVERY AND/OR PICKUP.
 - ALL REMOVED TRAFFIC SIGNAL EQUIPMENT SHALL BE RETURNED TO LADOT. ARRANGEMENTS FOR RETURNING IDENTIFIED EQUIPMENT TO LADOT SHALL BE MADE FIVE (5) WORKING DAYS IN ADVANCE BY CONTACTING THE LADOT MATERIAL CONTROL DIVISION AT (213) 580-5477.
 - ALL EXISTING TRAFFIC CONTROL SIGNING SHALL BE MAINTAINED WITH STANDARD SIGN BRACKETS BY THE CONTRACTOR. EXCEPT WHERE OTHERWISE INDICATED, EXISTING LARGE STREET NAME SIGNS AND MAST ARM TYPE STANDARDS SHALL BE RELOCATED FROM THE VERTICAL POLE TO THE MAST ARM PER LADOT STANDARD DRAWING NO. S-457.0. THE CONTRACTOR SHALL COORDINATE WITH LADOT SIGN SHOP AT (213) 485-8918 FOR ANY REQUIRED LARGE STREET NAME SIGNS. ANY TRAFFIC CONTROL SIGNING DAMAGED OR LOST BY THE CONTRACTOR SHALL BE REPLACED AT THE CONTRACTOR'S EXPENSE.

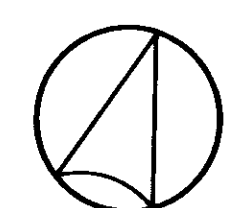


MAINTAINED BY THE CITY OF LOS ANGELES
 MAINTENANCE COST SHARING:
 State of California 100%
 City of Los Angeles 0%

SANTA MONICA BLVD. TRANSIT PARKWAY PROJECT RESTORATION PLAN

RECOMMENDED <i>Ina Van Der Lean</i> Transportation Engineer	APPROVED <i>Thomas L. Jones</i> Senior Transportation Engineer
DATE: <i>June 27, 2002</i>	DATE: <i>June 27, 2002</i>
AS BUILT	
Date of Installation:	CITY OF LOS ANGELES
LADOT Inspector:	DEPARTMENT OF TRANSPORTATION
Condition As Of:	RITA L. ROBINSON, General Manager
LADOT Engineer:	TITLE
District: WESTERN	SANTA MONICA BLVD. TRANSIT PARKWAY PROJECT
Thomas Guide: 632 AS	COTNER AVE., SANTA MONICA BLVD. & SAN DIEGO FWY. NB RAMPS
References: DM1298149 FBI3009/10 FB23607/4 21798 D-495 D-30911 P-8741 P-18448 P-24589 P-27995 DR520 PROJECT NO. 74917 "AS BUILT" 02-14-90 GEOMETRIC DESIGN DWG. NO. A-3166	File Name: 21825-M5.DWG
	Intersection No.: 21825
	Project No.: 90297
NOTICE: IF PLAN HAS NOT BEEN IMPLEMENTED WITHIN TWO (2) YEARS OF THE APPROVAL DATE, IT MUST BE RESUBMITTED TO LADOT SIGNAL DESIGN SECTION FOR REVIEW AND APPROVAL.	

CALTRANS - ELECTRICAL	
REVIEWED BY	DATE



Scale: 1:250
 North/South: COTNER AVE.

(LADOT Revised 9/96)