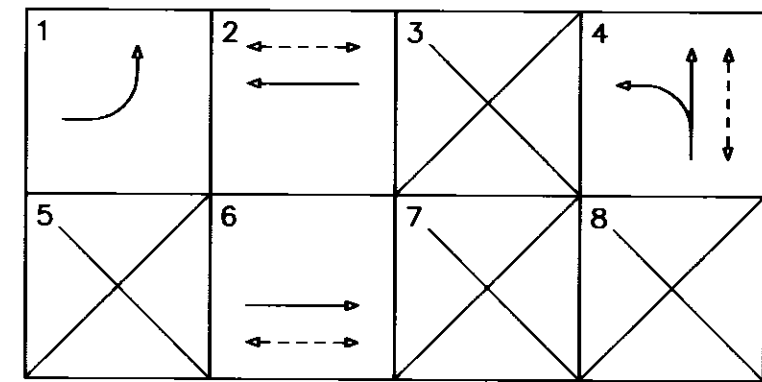


SIGNAL STANDARD SCHEDULE					
No.	TYPE	FOUND. TYPE	PED. PUSH BUTN TYPE	PHASE	REMARKS
1	332 Cab.	F-332			ATSAC 2070 Controller in 332 Cabinet
2	1	F-1	.10	4	
3	1	F-1	.10	4	
4	19-1-113	CIDH	.15	4	7.6 Mast Arm
5	CD851	BSL			
6	Overhead				Sign Bridge
7	CD953C	BSL			
8	12.1 Davit	CIDH			9.1 Mast Arm
9	1	F-1			
10	19-4-113	CIDH			7.62 Mast Arm

* Existing
 ** Per CALTRANS Std. Plan. No. ES-7F, ES-7M & ES-7N



EXISTING PHASE DIAGRAM

ESTIMATED MATERIAL FURNISHED BY LADOT	
UNITS	MATERIAL

ESTIMATED SALVAGE MATERIAL TO BE RETURNED TO LADOT	
UNITS	MATERIAL
1	170 Controller and Cabinet

CONDUCTOR SCHEDULE		RUN																							
SIZE No.	CABLE / WIRE	1	2	3	4	5	6	7	8	9	10	11	12	13	14	15	16	17	18	19	20	21	22	23	24
M	5 CONDUCTOR CABLE																								
U	5 X #14																								
L	9 CONDUCTOR CABLE																								
T	8 X #14 & 1 X #12 (COM)																								
I	12 CONDUCTOR CABLE																								
	11 X #14 & 1 X #12 (COM)																								
	28 CONDUCTOR CABLE																								
	27 X #14 & 1 X #10 (COM)																								
6	SERVICE																								
14	PED PUSH BUTTON																								
18	DLC (2 PAIR)																								
16	DLC (EXISTING)																								
14	INTERCONNECT (7 WIRE)																								
22	INTERCONNECT (25 PAIR)																								
12	BUS DLC (1 PAIR)																								
	CONDUIT SIZE (mm)	53	76	76	53	76	76	53	76	76	53	76	76	53	76	76	53	76	76	53	76	76	53	76	

* Existing

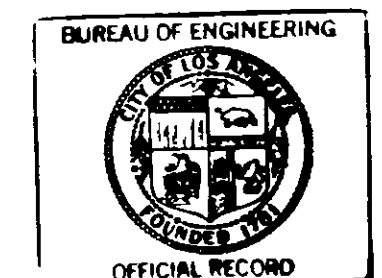
- NOTES:
- SEMI-ACTUATED OPERATION (ATSAC 2070 CONTROLLER IN 332 CABINET)
 - #1 - SANTA MONICA BLVD. EB LT
 - #2 - SANTA MONICA BLVD. WB & N/S PED. XING
 - #4 - SAN DIEGO FWY. NB OFF RAMP NB, NB LT & E/S PED. XING
 - #6 - SANTA MONICA BLVD. EB & S/S PED. XING
 - WESTWOOD ATSAC SYSTEM DIRECT WIRE (CABLE) INTERCONNECT
 - INSTALL STRIPING PAVEMENT MARKINGS AND SIGNS PER GEOMETRIC DESIGN DWG. NO. A-3164(2).
 - SEE STREET LIGHTING SHEET FOR WORK ON STREET LIGHTING FACILITIES.
 - RELOCATE LARGE STREET NAME SIGN TO NEW STANDARD.
 - REMOVE TRAFFIC SIGNAL EQUIPMENT, PULLBOX, FOUNDATION AND ABANDON CONDUIT.
 - CONTRACTOR SHALL CONTACT THE LADOT SIGNAL DESIGN SECTION AT (213) 580-5318 FOR ANY SIGNAL RELATED PROBLEMS ENCOUNTERED DURING CONSTRUCTION.

(SEE SHEET 10 OF PLAN D-32149)

NOTICE TO CONTRACTOR

- EXCEPT WHERE OTHERWISE INDICATED, MATERIALS AND INSTALLATION METHODS SHALL CONFORM TO THE LATEST EDITION, WITH SUPPLEMENTS, OF THE STANDARD SPECIFICATION FOR PUBLIC WORKS CONSTRUCTION, ADOPTED BY THE CITY OF LOS ANGELES BOARD OF PUBLIC WORKS (LABPW), INCLUDING THE LATEST VERSION OF STANDARD PLAN S-610 ISSUED BY THE LABPW AND THE LATEST EDITION, WITH AMENDMENTS, OF THE SPECIAL PROVISIONS AND STANDARD DRAWINGS FOR THE INSTALLATION AND MODIFICATION OF TRAFFIC SIGNALS, ISSUED BY THE CITY OF LOS ANGELES DEPARTMENT OF TRANSPORTATION (LADOT).
- THE LADOT TRAFFIC SIGNAL INSPECTOR AT (213) 485-6836 SHALL BE NOTIFIED THREE (3) WORKING DAYS PRIOR TO THE BEGINNING OF CONSTRUCTION. FOR WORK IN THE AUTOMATED TRAFFIC SURVEILLANCE AND CONTROL (ATSAC) PROJECT AREA, A FIELD MEETING SHALL BE SCHEDULED WITH THE ATSAC PROJECT ENGINEER AT (213) 847-0303 AND THE SENIOR MAINTENANCE SUPERVISOR AT (213) 485-6790 THREE (3) WORKING DAYS PRIOR TO THE BEGINNING OF CONSTRUCTION. FULL RESTORATION OF THE ATSAC SYSTEM MUST OCCUR WITHIN FIVE (5) WORKING DAYS AFTER SHUT DOWN.
- REGULAR TRAFFIC SIGNAL CONTROL SHALL BE MAINTAINED FROM 6:00 A.M. TO 9:00 A.M. AND 3:00 P.M. TO 7:00 P.M. ON WEEKDAYS, EXCEPT NATIONAL HOLIDAYS. FLASHING, DEACTIVATION AND ACTIVATION OF SIGNALS SHALL BE ACCOMPLISHED ONLY BY A LADOT TRAFFIC SIGNAL ELECTRICIAN. ALL ARRANGEMENTS TO DEACTIVATE SIGNALS SHALL BE MADE 24 HOURS IN ADVANCE BY CONTACTING THE LADOT TRAFFIC SIGNAL DEDICATED LINE AT (213) 485-9161 BETWEEN 6:30 A.M. AND 12 NOON. THE LADOT PROJECT NUMBER MUST BE GIVEN AT THIS TIME. THE CONTRACTOR WILL BE CHARGED FOR ALL ELECTRICAL AND TRAFFIC CONTROL SERVICE PROVIDED BY LADOT.
- ARRANGEMENTS FOR OBTAINING ANY MATERIALS IDENTIFIED TO BE SUPPLIED BY LADOT SHALL BE MADE TEN (10) WORKING DAYS IN ADVANCE BY CONTACTING THE LADOT FIELD OPERATIONS DIVISION AT (213) 580-5350. HOWEVER, TRAFFIC SIGNAL CONTROLLERS REQUIRE THIRTY (30) CALENDAR DAYS ADVANCE NOTICE AND MUST BE PICKED UP WITHIN FIFTEEN (15) CALENDAR DAYS AFTER NOTIFICATION. CONTACT LADOT SIGNAL SHOP AT (213) 847-2944 TO COORDINATE CONTROLLER DELIVERY AND/OR PICKUP.
- ALL REMOVED TRAFFIC SIGNAL EQUIPMENT SHALL BE RETURNED TO LADOT. ARRANGEMENTS FOR RETURNING IDENTIFIED EQUIPMENT TO LADOT SHALL BE MADE FIVE (5) WORKING DAYS IN ADVANCE BY CONTACTING THE LADOT MATERIAL CONTROL DIVISION AT (213) 580-5477.
- ALL EXISTING TRAFFIC CONTROL SIGNING SHALL BE MAINTAINED WITH STANDARD SIGN BRACKETS BY THE CONTRACTOR. EXCEPT WHERE OTHERWISE INDICATED, EXISTING LARGE STREET NAME SIGNS ON MAST ARM TYPE STANDARDS SHALL BE RELOCATED FROM THE VERTICAL POLE TO THE MAST ARM PER LADOT STANDARD DRAWING NO. S-457.0. THE CONTRACTOR SHALL COORDINATE WITH LADOT SIGN SHOP AT (213) 485-8918 FOR ANY REQUIRED LARGE STREET NAME SIGNS. ANY TRAFFIC CONTROL SIGNING DAMAGED OR LOST BY THE CONTRACTOR SHALL BE REPLACED AT THE CONTRACTOR'S EXPENSE.

Revised 01/02



MAINTAINED BY THE CITY OF LOS ANGELES
 MAINTENANCE COST SHARING:
 State of California 100%
 City of Los Angeles 0%

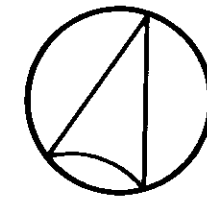
SANTA MONICA BLVD. TRANSIT PARKWAY PROJECT
 DETOUR STRIPING STAGE 2

RECOMMENDED June 27, 20 02
 Approved JUNE 27, 20 02
 Ina Van Der Laan Transportation Engineer
 Thomas L. Jones Senior Transportation Engineer

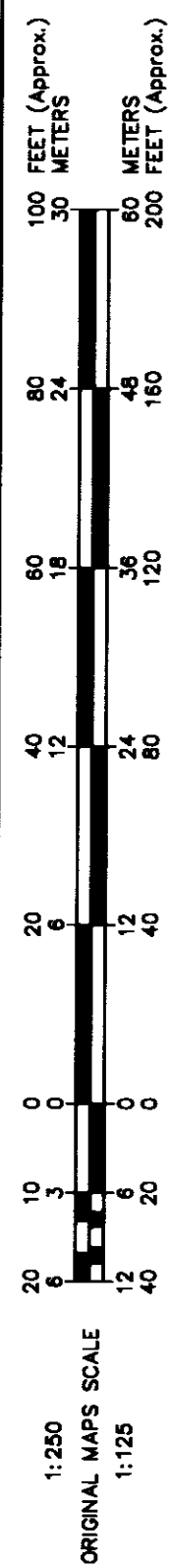
AS BUILT	CITY OF LOS ANGELES DEPARTMENT OF TRANSPORTATION RITA L. ROBINSON, General Manager	
Date of installation:	TITLE	
LADOT Inspector:	COTNER AVE., SANTA MONICA BLVD. & SAN DIEGO FWY. NB RAMPS	
Condition As Of:	District WESTERN	
LADOT Engineer:	Thomas Guide 632 AS	
References	File Name	Intersection No.
D41290149 F813009/10 F823607/4 21798 D-495 D-30911 P-8741 P-18448 P-24589 P-27595 DR520 Project No. 74917 Substructure 129-149/D Geom. Dep. No. A-3164(1)	21825-M2.DWG	21825
	Project No.	90297
NOTICE: IF PLAN HAS NOT BEEN IMPLEMENTED WITHIN TWO (2) YEARS OF THE APPROVAL DATE, IT MUST BE RESUBMITTED TO LADOT SIGNAL DESIGN SECTION FOR REVIEW AND APPROVAL.		

- NOTES: (Continued)
- INSTALL ATSAC 2070 CONTROLLER IN 332 CABINET. THE CONTRACTOR SHALL PROVIDE A COMPLETE FUNCTIONING CONTROLLER ASSEMBLY AND CABINET CONFORMING TO THE LATEST LADOT SPECIFICATIONS FOR 2070 CONTROLLER. CONTRACTOR TO DELIVER COMPLETELY ASSEMBLED CONTROLLER FOR TESTING TO THE DEPARTMENT OF TRANSPORTATION GENERAL SHOP, PIPER TECHNICAL CENTER, 555 RAMIREZ ST. THIRTY (30) CALENDAR DAYS PRIOR TO INSTALLATION.
 - REMOVE CONTROLLER, CABINET AND FOUNDATION.
 - JOIN AND EXTEND CONDUIT INTO NEW PULLBOX.
 - JOIN EXISTING LADWP SERVICE CONDUIT AND INSTALL PULLBOX. ALL WORK ON ELECTRICAL SERVICE TO BE DONE IN CONJUNCTION WITH LADWP. CONTACT AT (213) 367-3003 FOR SERVICE.
 - INSTALL TWO (2) #6 WIRES WITH A 60 AMP FUSE AND AN IN-LINE WATERPROOF FUSE HOLDER FOR THE CONTROLLER AT THIS INTERSECTION AND TWO (2) #6 WIRES WITH 60 AMP. FUSE AND IN-LINE WATERPROOF FUSE HOLDER FOR THE CONTROLLER AT SANTA MONICA BLVD. AND BELLOIT AVE.
 - INSTALL TRANSIT PRIORITY LOOP PER LADOT STD. DWG. NO. S-70.1F.
 - INSTALL 1 TRANSIT PRIORITY SENSOR UNIT IN THE CONTROLLER CABINET PER LADOT STD. DWG. NO. S-70.3A.
 - REWIRE LOOPS SEPARATELY FROM CONTROLLER.

CALTRANS - ELECTRICAL	
REVIEWED BY	DATE



Scale: 1:250
 North/South: COTNER AVE.
 (All Units in Meters Unless Specified)



(LADOT Revised 9/96)