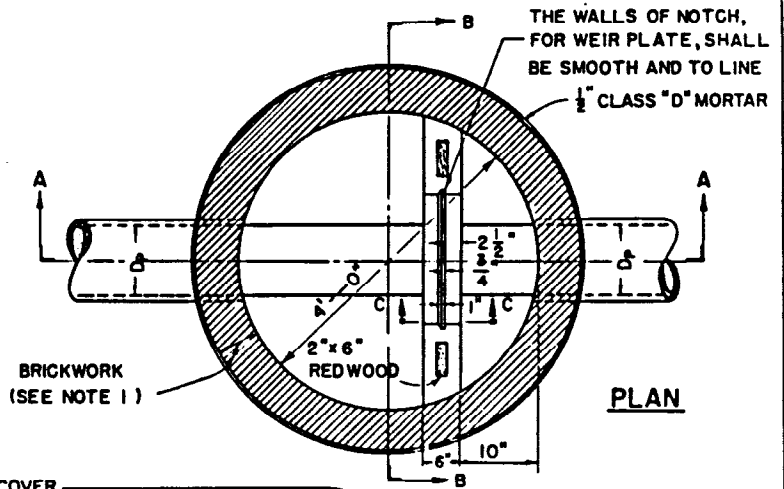
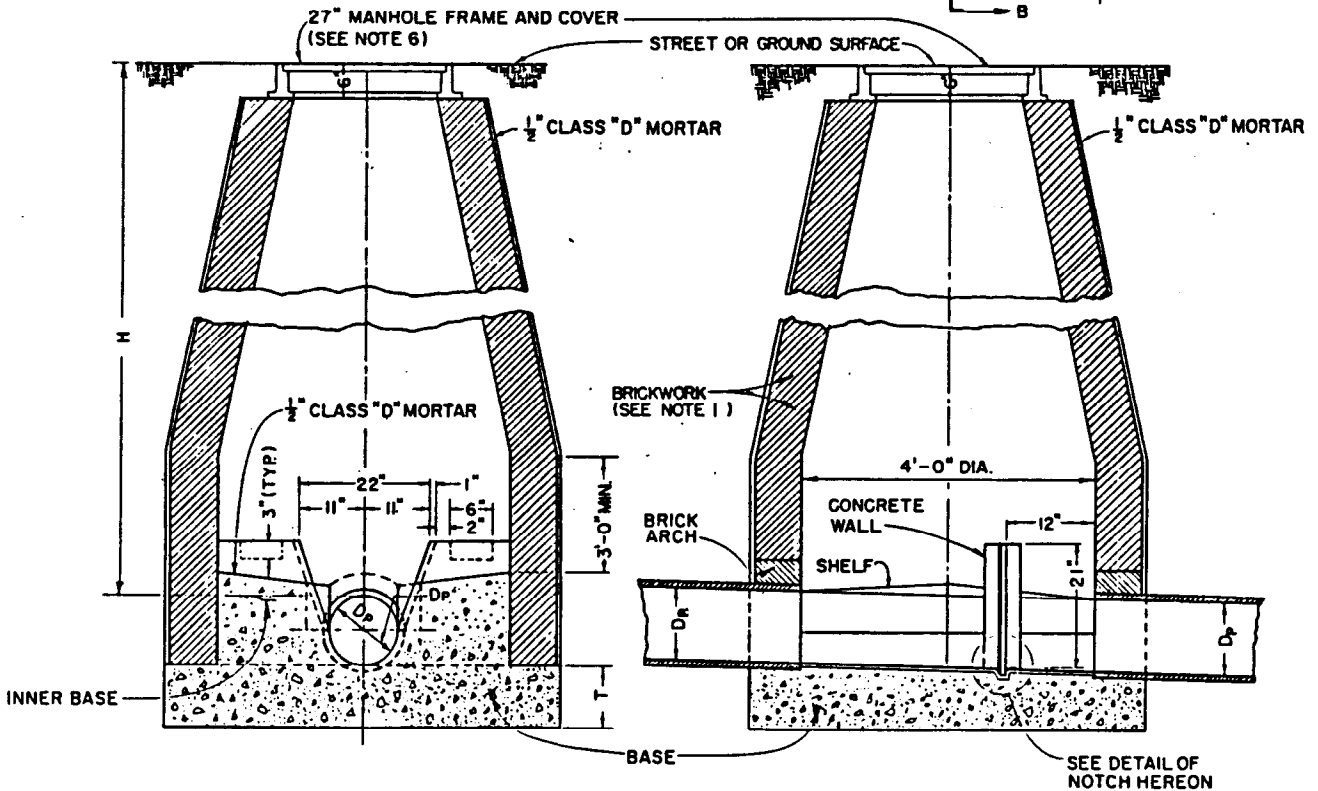


DETAIL OF NOTCH



PLAN



SECTION C-B

SECTION A-A

DEPARTMENT OF PUBLIC WORKS

BUREAU OF ENGINEERING

CITY OF LOS ANGELES

WEIR MANHOLE TYPE I

STANDARD PLAN  
S-145-0

SUBMITTED <i>Oct 5 1984</i> <i>Alvin F. Rose</i> ENGINEER OF DESIGN <i>Robert J. Davis</i> DEPUTY ENGINEER	REVISIONS				SUPERSEDES B-3461	REFERENCES S-140 S-141 S-142 S-152 S-282
	NO.	DATE	DESCRIPTION	ENGR. OF DESIGN		
APPROVED <i>2/21/1984</i> <i>Harold L. ...</i> CITY ENGINEER						
DESIGNED BY LIE	DRAWN BY GAM	CHECKED BY LJM				
					VAULT INDEX NUMBER B-401B	
					SHEET 1 OF 2 SHEETS	

## NOTES

1. EXCEPT AS INDICATED HEREON OR ON THE PROJECT PLANS, MANHOLES SHALL CONFORM TO STANDARD PLAN S-140, SEWER MANHOLES - GENERAL, STANDARD PLAN S-141, BRICK MANHOLE, AND STANDARD PLAN S-142, PRECAST CONCRETE SEWER MANHOLE.
2. ALL SEWER PIPE SHALL, UNLESS OTHERWISE INDICATED ON THE PROJECT PLANS, BE ANY OF THE FOLLOWING:
  - A. VCP CONFORMING TO SECTION 207-8 OF THE STANDARD SPECIFICATIONS.
  - B. ABS SOLID WALL PIPE CONFORMING TO SECTION 207-14 OF THE STANDARD SPECIFICATIONS.
  - C. ABS COMPOSITE PIPE CONFORMING TO SECTION 207-15 OF THE STANDARD SPECIFICATIONS.
  - D. PVC PIPE CONFORMING TO SECTION 207-16 OF THE STANDARD SPECIFICATIONS.
3. DIMENSIONS:  
D<sub>p</sub> - SEE PROJECT PLANS.  
H - SEE PROJECT PLANS.
4. CONCRETE SHALL CONFORM TO SECTION 201 OF THE STANDARD SPECIFICATIONS, AND SHALL BE:  
CLASS 660-B-3750 FOR THE INNER BASE,  
CLASS 560-B-3250 FOR THE BASE, WALLS, AND SLABS  
CLASS 420-C-2000 FOR BACKFILL AND PIPE ENCASEMENT.  
THE CONTRACTOR MAY FURNISH A HIGHER CLASS OF CONCRETE FOR THE BASE, WALLS, SLABS, AND/OR BACKFILL AND PIPE ENCASEMENT TO MINIMIZE THE NUMBER OF DIFFERENT CLASSES OF CONCRETE USED.
5. WEIR PLATES, WHEN REQUIRED, SHALL CONFORM TO STANDARD PLAN S-152.
6. INSTALL 27" MANHOLE FRAME AND COVER CONFORMING TO STANDARD PLAN S-282.