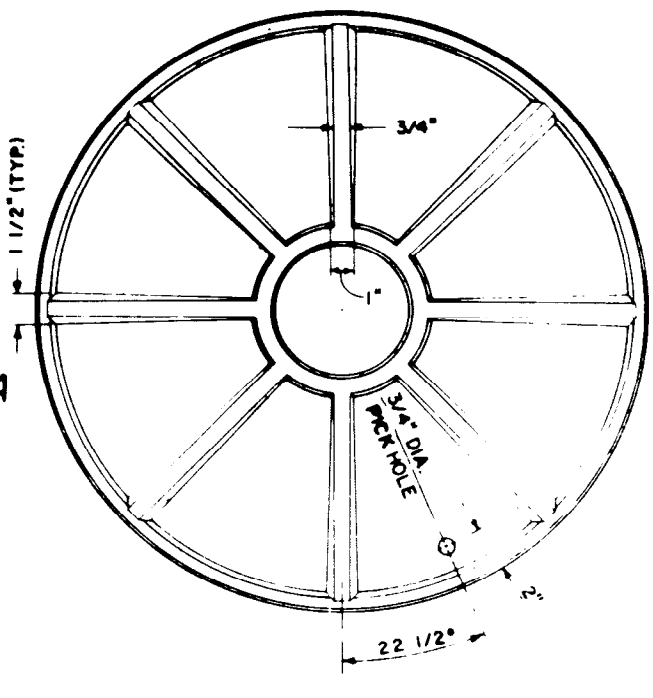
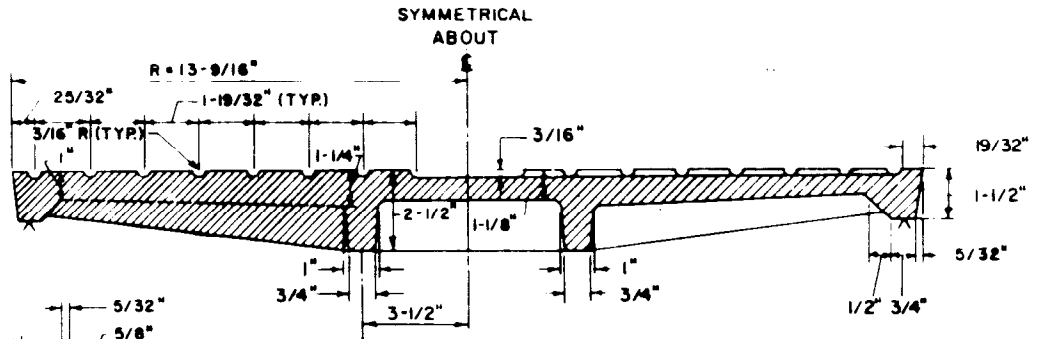


**TOP PLAN OF COVER**

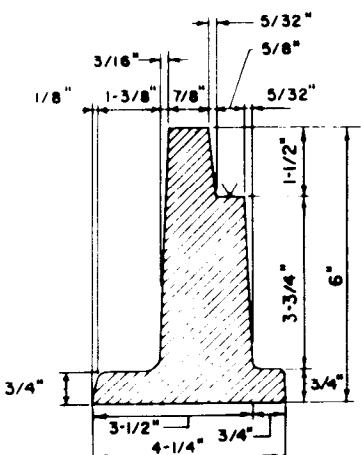


**BOTTOM PLAN OF COVER**

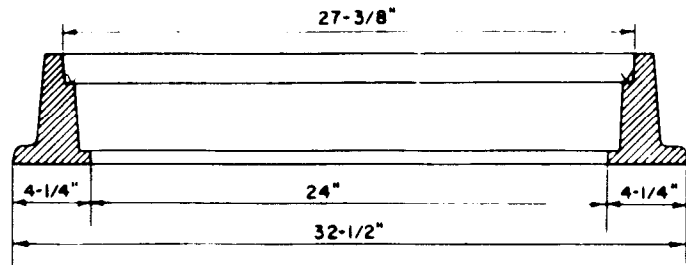
2 \* (SEE NOTE II)



**SECTION A-A**



**DETAIL OF FRAME**



**SECTION THRU FRAME**

1/2" RAD. FILLETS, TYP.  
 MACHINE FINISH

BUREAU OF ENGINEERING      DEPARTMENT OF PUBLIC WORKS      CITY OF LOS ANGELES

**MANHOLE FRAME AND COVER, 24-INCH**

**STANDARD PLAN  
 S-281-2**

SUBMITTED *May 16, 1992*  
*[Signature]*  
 ENGINEER OF DESIGN  
*[Signature]*  
 DEPUTY ENGINEER

APPROVED *May 13, 1992*  
*[Signature]*  
 CITY ENGINEER

DESIGNED BY: RGC    DRAWN BY: RGM    CHECKED BY: RGS



| REVISIONS |  | SUPERSEDES | REFERENCES |
|-----------|--|------------|------------|
| NO        | DESCRIPTION                                |            |            |
| 2         | REVISED NOTE 7, ADDED NOTES 11, 12 AND 13. | B-4045     |            |
|           |  |            |            |
|           |  |            |            |
|           |  |            |            |
|           |  |            |            |
|           |  |            |            |
|           |  |            |            |
|           |  |            |            |
|           |  |            |            |

VAULT INDEX NUMBER B-4114  
 SHEET 1 OF 2 SHEETS

## NOTES

1. MANHOLE FRAME AND COVER SHALL BE CAST IRON CONFORMING TO SECTION 206-3 OF THE STANDARD SPECIFICATIONS.
2. ALL HOLES IN CAST IRON SHALL BE DRILLED AFTER CASTING OR PLUGGED PRIOR TO CASTING. THEY SHALL NOT BE PUNCHED.
3. ALL IRON CASTINGS SHALL RECEIVE AN ASPHALTIC COATING, AFTER FABRICATION, CONFORMING TO SECTION 206-3.6 OF THE STANDARD SPECIFICATIONS.
4. ALL LETTERS, EXCEPT FOR THE WORD "OF", SHALL BE 2-1/4-INCHES HIGH WITH LINE WIDTH OF 5/16-INCH. THE LETTERS FOR "OF" SHALL BE 1-3/8-INCHES HIGH WITH LINE WIDTH OF 3/16-INCH WIDE.
5. COVERS FOR USE ON SEWER STRUCTURES SHALL BEAR THE LETTER "S" AND ON STORM DRAIN STRUCTURES THE LETTER "D" IN THE CENTER OF THE COVER.
6. SURFACES OF ALL LETTERS SHALL BE FLUSH WITH THE FINISHED SURFACE OF THE COVER.
7. WEIGHTS SHALL BE WITHIN 5% OF THE FOLLOWING:  

COVER - 175 LBS.  
FRAME - 260 LBS.
8. THE INSIDE DIAMETER OF THE FRAME, WHERE THE COVER RESTS, SHALL NOT VARY MORE THAN  $\pm 1/16$ -INCH. THE OUTSIDE RADIUS OF THE COVER SHALL NOT VARY MORE THAN  $\pm 1/32$ -INCH.
9. A FOUNDRY IDENTIFICATION MARK SHALL BE LOCATED ON THE BOTTOM OF THE COVER AND THE INSIDE OF THE FRAME.
10. THE MANHOLE FRAME AND COVER SHALL BE TESTED FOR ACCURATE FIT, AND MARKED IN SETS PRIOR TO DELIVERY TO THE JOBSITE.

2

11. FRAMES OR COVERS IMPORTED INTO THE UNITED STATES SHALL BE MARKED ON THE TOP SURFACE WITH THE ENGLISH NAME OF THE COUNTRY OF ORIGIN PRECEDED BY "MADE IN" BY MEANS OF CAST-IN-MOLD LETTERING. SUCH LETTERING SHALL BE 2-1/4 INCHES HIGH WITH LINE WIDTH OF 5/16-INCH ON COVERS AND 1/2-INCH HIGH WITH LINE WIDTH OF 1/8-INCH ON THE TOP SURFACE OF THE UPPER PORTION OF THE FRAME WHICH REMAINS EXPOSED. ETCHING, DIE STAMPING, ENGRAVING OR WELDING ON OF LETTERS WILL NOT BE ACCEPTED.

2

12. THE PROOF-LOAD FOR TEST METHOD B, SUBSECTION 206-3.2 OF THE STANDARD SPECIFICATIONS IS 40,700 POUNDS.

2

13. FOR THOSE MANHOLES OR STRUCTURES DESIGNATED AS "PRIVATE" ON THE PLANS OR SPECIFICATIONS THE WORD "PRIVATE" SHALL BE SUBSTITUTED FOR "CITY OF L.A."