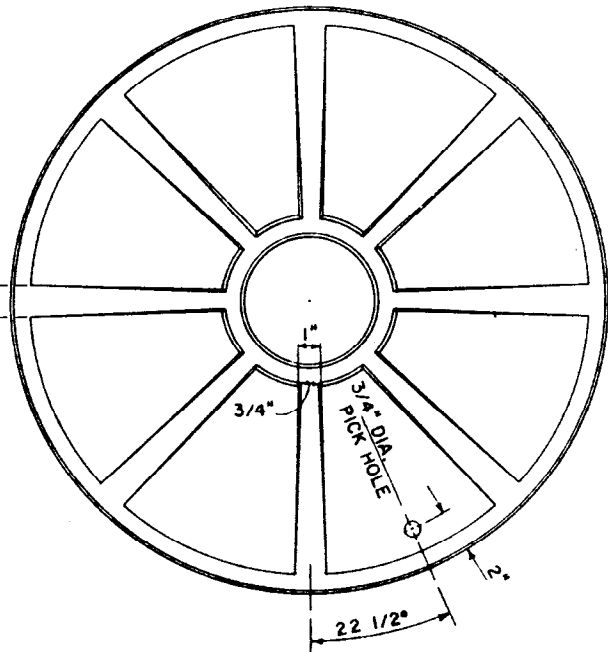
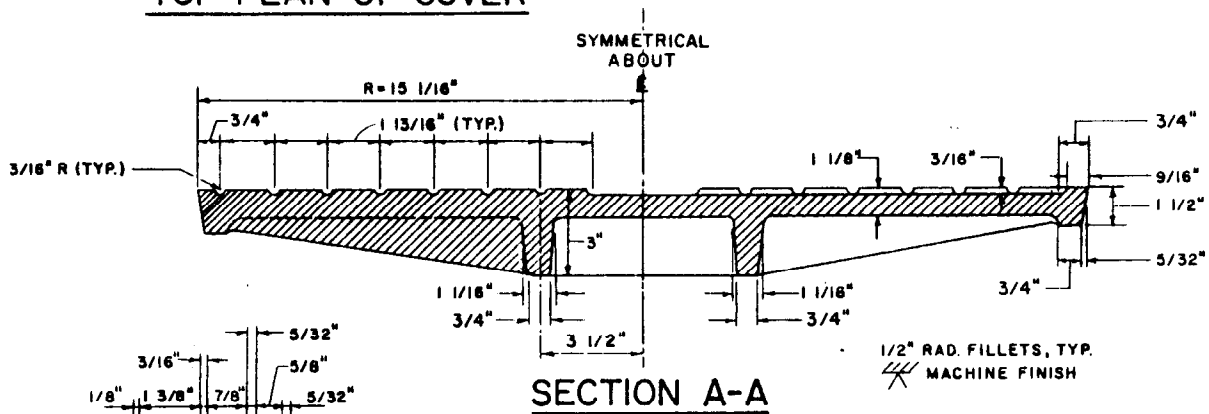


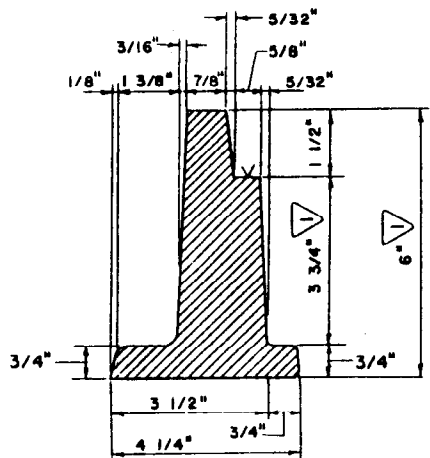
TOP PLAN OF COVER



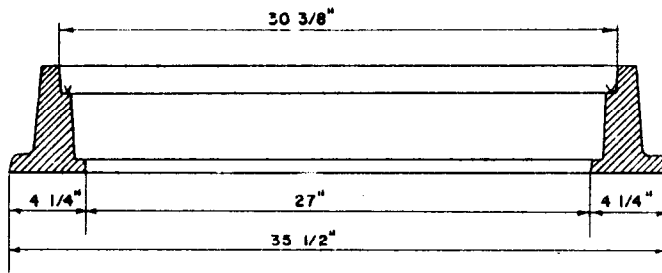
BOTTOM PLAN OF COVER



SECTION A-A



DETAIL OF FRAME



SECTION THRU FRAME

BUREAU OF ENGINEERING DEPARTMENT OF PUBLIC WORKS CITY OF LOS ANGELES

MANHOLE FRAME and COVER 27-INCH

STANDARD PLAN S-282-1

SUBMITTED <u>JAN 3 1974</u> <i>Alfred L. Deane</i> CIVIL ENGINEER	REVISIONS				SUPERSEDES B-3818	REFERENCES
	NO	DATE	DESCRIPTION	ENGR OF DESIGN		
APPROVED <u>Jan 12 1974</u> <i>Donald S. Silberman</i> CITY ENGINEER	1	6-10-82	MODIFIED NOTES, FRAME HEIGHT DESIGNATION	<i>D.P. King</i>		
DESIGNED BY	DRAWN BY	CHECKED BY				
WRN	JRP	AEF				

Vault Index Number B-4046
SHEET 1 OF 2 SHEETS

NOTES

1. MANHOLE FRAME AND COVER SHALL BE CAST IRON CONFORMING TO SECTION 206-3 OF THE STANDARD SPECIFICATIONS.
2. ALL HOLES IN CAST IRON SHALL BE DRILLED AFTER CASTING OR PLUGGED PRIOR TO CASTING. THEY SHALL NOT BE PUNCHED.
3. ALL IRON CASTINGS SHALL RECEIVE AN ASPHALTIC COATING, AFTER FABRICATION, CONFORMING TO SECTION 206-3.6 OF THE STANDARD SPECIFICATIONS.
4. ALL LETTERS, EXCEPT FOR THE WORD "OF", SHALL BE 2-1/4-INCHES HIGH WITH LINE WIDTH OF 5/16-INCH. THE LETTERS FOR "OF" SHALL BE 1-3/8-INCHES HIGH WITH LINE WIDTH OF 3/16-INCH WIDE.
5. COVERS FOR USE ON SEWER STRUCTURES SHALL BEAR THE LETTER "S" AND ON STORM DRAIN STRUCTURES THE LETTER "D" IN THE CENTER OF THE COVER.
6. SURFACES OF ALL LETTERS SHALL BE FLUSH WITH THE FINISHED SURFACE OF THE COVER.
7. WEIGHTS SHALL BE WITHIN 5% OF THE FOLLOWING:

COVER - 240 LBS.
FRAME - 250 LBS.
8. THE INSIDE DIAMETER OF THE FRAME, WHERE THE COVER RESTS, SHALL NOT VARY MORE THAN $\pm 1/16$ -INCH. THE OUTSIDE RADIUS OF THE COVER SHALL NOT VARY MORE THAN $\pm 1/32$ -INCH.
9. A FOUNDRY IDENTIFICATION MARK SHALL BE LOCATED ON THE BOTTOM OF THE COVER AND THE INSIDE OF THE FRAME.
10. THE MANHOLE FRAME AND COVER SHALL BE TESTED FOR ACCURATE FIT, AND MARKED IN SETS PRIOR TO DELIVERY TO THE JOBSITE.