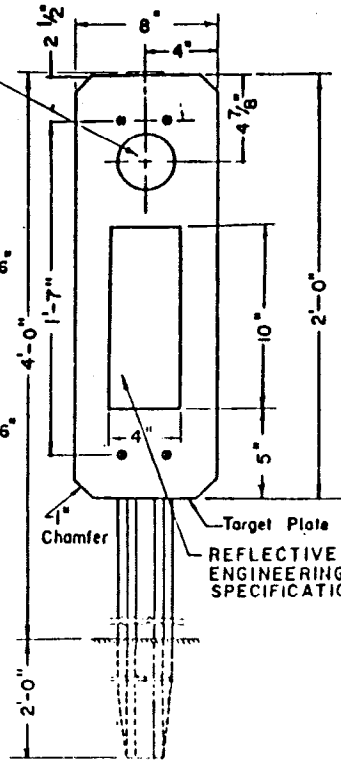
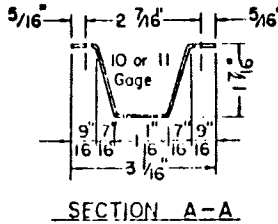
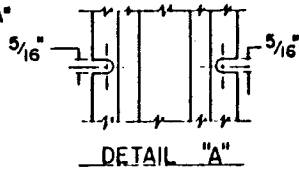
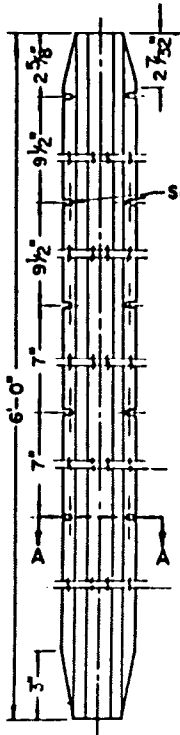


CLEAR REFLECTOR, DIA. = $3\frac{1}{4}$ "
 ATTACH TO TARGET PLATE
 WITH $\frac{3}{16}$ " DIA. BLIND
 ALUMINUM RIVET.



METAL MARKER POST

GUIDE MARKER

NOTES

1. GUIDE MARKERS ARE TO BE PLACED ADJACENT TO THE SHOULDER OF A ROADWAY ON SHARP CURVES, OR NEAR THE EDGE OF EMBANKMENTS. THE LOCATION AND SPACING SHALL BE DETERMINED BY THE ENGINEER.
2. WHERE SOIL CONDITIONS PERMIT, METAL POSTS MAY BE DRIVEN IN PLACE, PROVIDED THE METHOD OF DRIVING DOES NOT DAMAGE THE POST. IF SOIL CONDITIONS DO NOT PERMIT DRIVING, POSTS SHALL BE SET IN PRE-DRILLED HOLES(4" ϕ) AND BACKFILL COMPACTED.
3. METAL TARGET PLATES SHALL BE INSTALLED AFTER THE POSTS HAVE BEEN SET IN PLACE
4. METAL MARKER POSTS, TARGET PLATES, HARDWARE AND REFLECTORS SHALL COMPLY IN ALL RESPECTS WITH THE LATEST APPLICABLE STANDARD SPECIFICATIONS OF THE STATE OF CALIFORNIA, DIVISION OF HIGHWAYS.

BUREAU OF ENGINEERING		DEPARTMENT OF PUBLIC WORKS			CITY OF LOS ANGELES	
GUIDE MARKERS				STANDARD PLAN S-460-0		
SUBMITTED: <i>Jan 19</i> 1972 <i>Ronald R. Blanton</i> DIVISION ENGINEER <i>W. A. H.</i> CITY ENGINEER	REVISIONS				REFERENCES	
	NO	DATE	DESCRIPTION	DIV. ENG'R	CITY ENG'R	Supersedes B-3732
APPROVED: <i>W. A. H.</i> 1972 <i>Ronald R. Blanton</i> CITY ENGINEER						
DESIGNED BY: W. A. H. DRAWN BY: B. T. Y. CHECKED BY: W. A. H.						VAULT INDEX NUMBER B-3809 SHEET 1 OF 1 SHEET