

White Point Landslide

January 23, 2012

Gary Lee Moore, City Engineer
City of Los Angeles
Bureau of Engineering
Eng.lacity.org



PROGRESS TO DATE

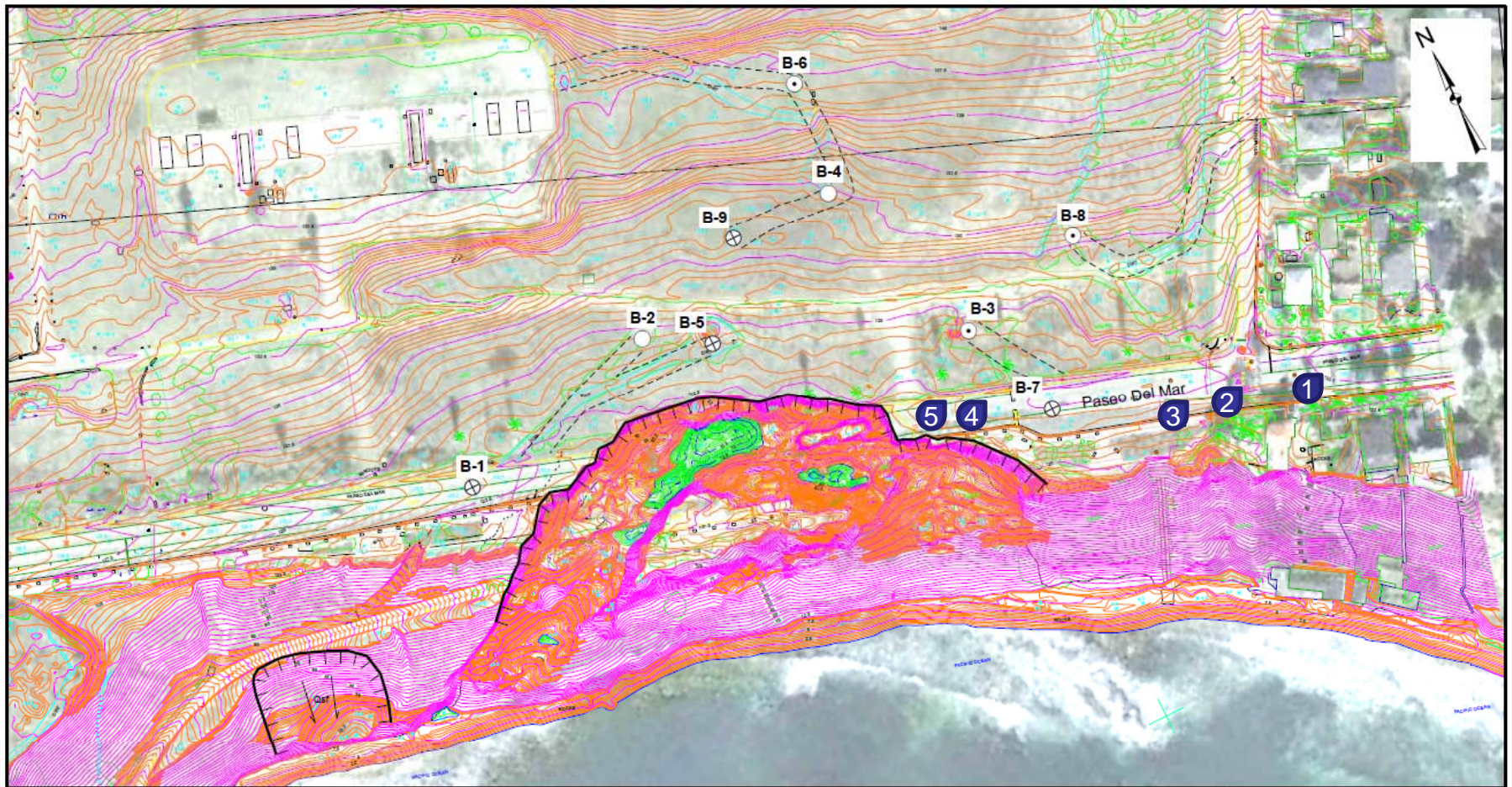
- Completed aerial survey - December 13, 2012
- Completed subsurface exploration – December 21, 2011
- Published December 2011 Status Report – December 23, 2011
- Published January 2012 Draft Preliminary Geotechnical Report – January 20, 2012
- Installed 20 above-ground survey monitoring stations

CURRENT TASKS

- Reading of instrumentation installation in borings B-1, B-5, B-7, and B-9
- Water level readings in borings B-3, B-6, and B-8
- Geologic Mapping along the toe of the landslide
- Construction of geologic cross sections
- Review of cores and samples from borings B-1, B-6, B-7, B-8, and B-9
- Reading of surface survey monuments

UPCOMING TASKS

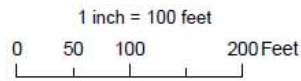
- Release Data Update by Early March 2012
- Data Collection
- Laboratory Testing
- Construct Geologic Cross Sections
- Slope Stability Analyses
- Prepare Alternative Solutions
- Distribute Draft Final Report by Early May 2012



Filename: I:\PROJECTS\10052 San Pedro Landslide\Graphics\PROPOSED BORING LOCATIONS.MXD

LEGEND

- Boring
- ⊕ Groundwater Well
- ⊕ Inclinometer
- ▬ Head Scarp
- - - - - Approximate Access Routes



White Point Landslide
San Pedro District
Los Angeles, California

SITE AND EXPLORATION PLAN

January 2012 51-1-10052-012



FIG. 1

5 Above Ground Survey Monitoring Points*

***Note: Above Ground Survey Monitoring Points have shown NO MOVEMENT**

SUMMARY OF SUBSURFACE EXPLORATIONS AND INSTRUMENTATION

Inclinometer Cumulative Displacement

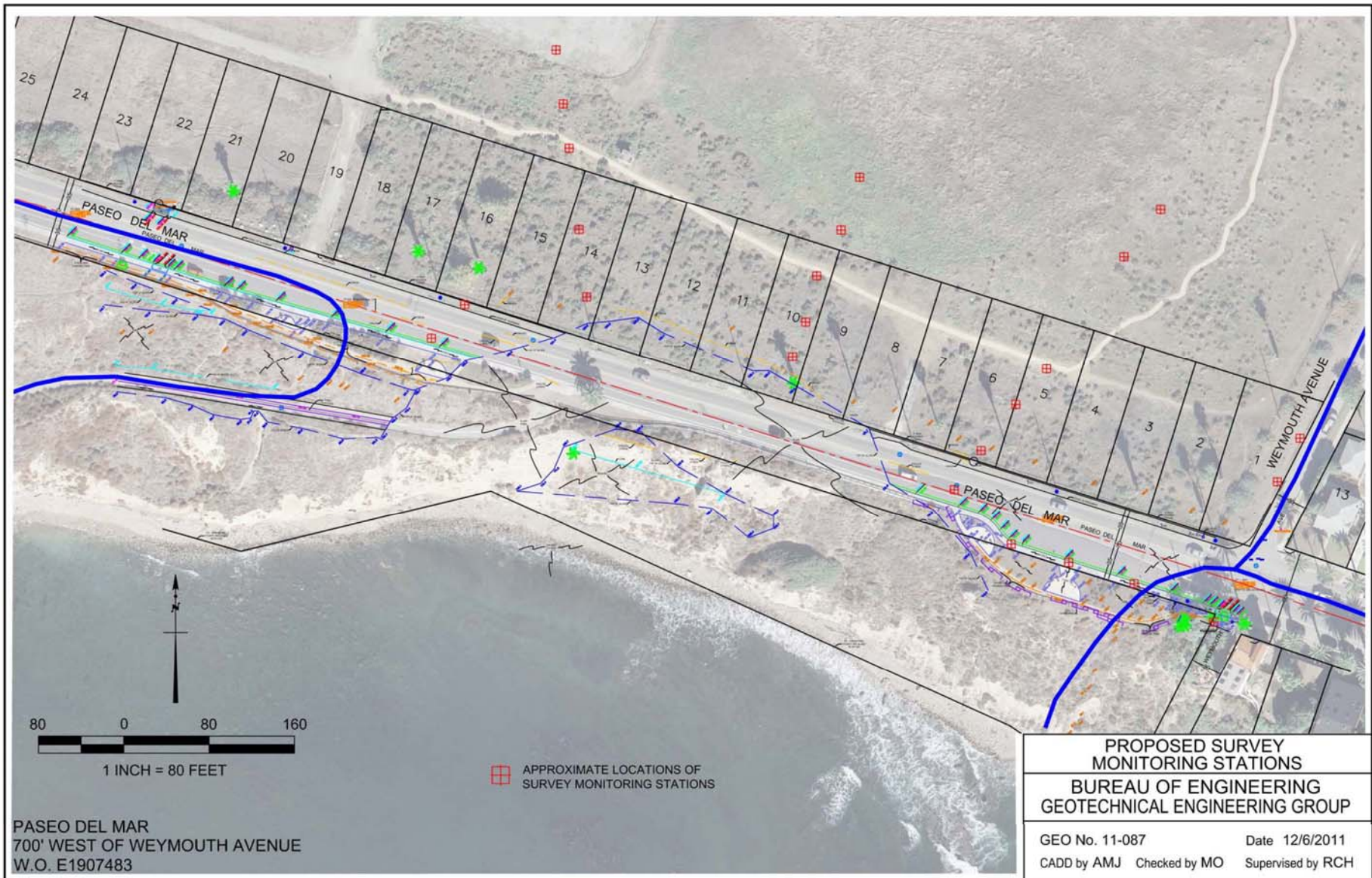
Boring	Baseline 12/28/11	First Reading 1/4/12	Second Reading 1/11/12
B-1	0	<0.1 inch	<0.1 inch
B-5	0	<0.1 inch	<0.1 inch
B-7	0	<0.1 inch	<0.1 inch
B-9	0	<0.1 inch	<0.1 inch

Note: Exploration and instrumentation readings show NO MOVEMENT

GROUNDWATER ELEVATIONS			
Boring	Reading 1	Reading 2	Reading 3
B-1	63	59.4	59.2
B-2	36.5	-	-
B-3	26.5	25.4	25.6
B-4	75	-	-
B-5	56	60.2	60
B-6	86.5	86.7	-
B-7	27.1	27	-
B-8	52	51.9	-
B-9	42.5	36.6	-

Above Ground Survey Monitoring Stations			
PT #1	N= 1718635.94	E= 6467068.78	EL= 121.92
PT #2	N= 1718655.69	E= 6467008.02	EL= 121.53
PT #3	N= 1718667.49	E= 6466973.29	EL= 121.50
PT #4	N= 1718768.94	E= 6466747.41	EL= 121.97
PT #5	N= 1718777.57	E= 6466719.69	EL= 121.74

Note: Results of Above Ground Surveys have shown NO MOVEMENT.



PASEO DEL MAR
 700' WEST OF WEYMOUTH AVENUE
 W.O. E1907483

■ APPROXIMATE LOCATIONS OF
 SURVEY MONITORING STATIONS

**PROPOSED SURVEY
 MONITORING STATIONS**
**BUREAU OF ENGINEERING
 GEOTECHNICAL ENGINEERING GROUP**

GEO No. 11-087 Date 12/6/2011
 CADD by AMJ Checked by MO Supervised by RCH

<http://eng.lacity.org/whitepoint/whitepointlandslide.htm>